



Book 2022 Page 2765

Document 2022 2765 Type 06 007 Pages 1
Date 9/14/2022 Time 11:08:42AM
Rec Amt \$7.00

Daneen Schindler, RECORDER/REGISTRAR
DELAWARE COUNTY IOWA

ds

PREPARED BY: RANDALL L. RATTENBORG 105 WEST MAIN STREET MANCHESTER, IA 52057, 563-927-2434

UNITED STATES PUBLIC LAND SURVEY CORNER CERTIFICATE

Land Survey Monuments situated in Section 14 , Township 87 North, Range 5 West of the Fifth Principal Meridian,
Delaware County, Iowa.

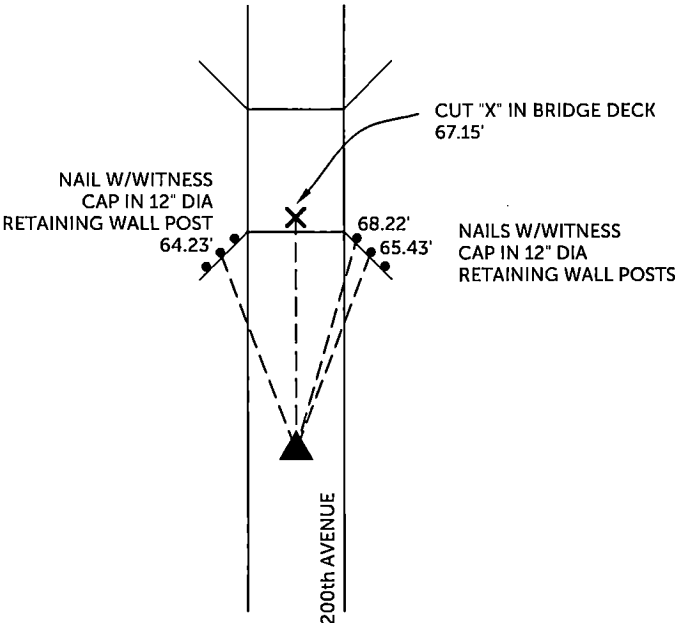
Previously recorded in County Recorder's Office in NW CORNER - BOOK 2006, PAGE 548
(book, page, document number, etc.)

NW CORNER, Found 1/2" rebar w/orange cap #8419

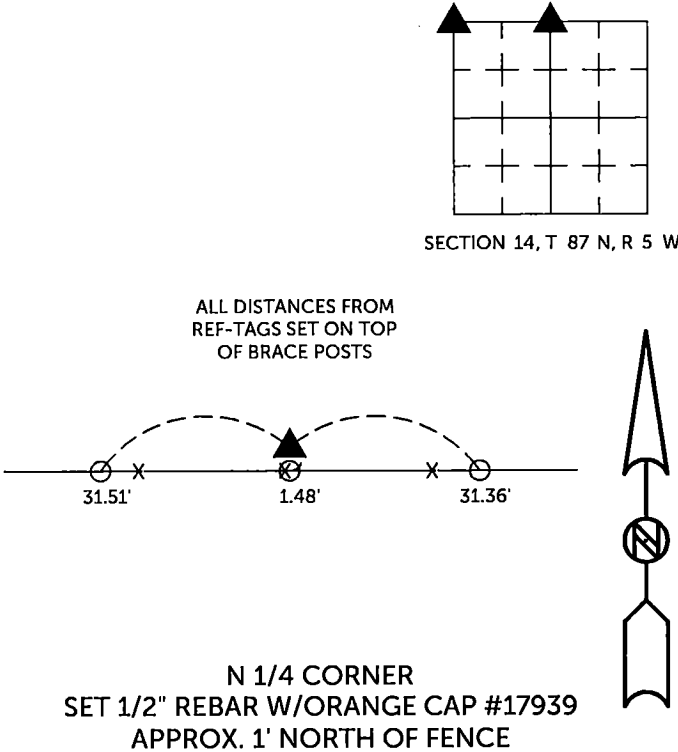
N 1/4 CORNER, Set 1/2" rebar w/orange cap #17939 at midpoint between NW Corner and NE Corner. Probed and dug for limestones as per County Surveyor notes in Book 2, Pages 35 and 142 and did not find them.

PLAN VIEW

(Show a minimum of three reference ties to durable physical objects, relevant monuments and physical conditions that will enable recovery of the corner.)



NW CORNER
FOUND 1/2" REBAR W/ORANGE CAP #8419



N 1/4 CORNER
SET 1/2" REBAR W/ORANGE CAP #17939
APPROX. 1' NORTH OF FENCE

TIES ARE TO PLAT PARCEL 2022-113
IN SECTION 14, T 87 N, R 5 W

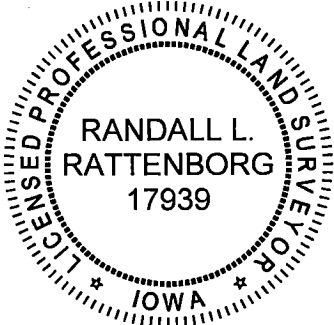
BURRINGTON GROUP, INC. PROJECT NO. 22-098

I HEREBY CERTIFY THAT THIS LAND SURVEYING DOCUMENT
WAS PREPARED AND THE RELATED SURVEY WORK WAS
PERFORMED BY ME OR UNDER MY DIRECT PERSONAL
SUPERVISION AND THAT I AM A DULY LICENSED PROFESSIONAL
LAND SURVEYOR UNDER THE LAWS OF THE STATE OF IOWA.

[Signature] 9/14/2022
Randall L. Rattenborg, P.L.S. License #17939 Date
My license renewal date is December 31, 2023

List Corners to be Indexed: Section Township Range
NW CORNER 14 T 87N R 5 W
N 1/4 CORNER

SEAL COVERS THIS SHEET ONLY



BURRINGTON GROUP, INC.
Civil Engineering | Land Surveying
105 W. Main Street Manchester, Iowa 52057