



Document 2022 2753 Type 06 007 Pages 1  
Date 9/13/2022 Time 3:58:42PM  
Rec Amt \$7.00

Daneen Schindler, RECORDER/REGISTRAR  
DELAWARE COUNTY IOWA

PREPARED BY: RANDALL L. RATTENBORG 105 WEST MAIN STREET MANCHESTER, IA 52057-563-927-2434

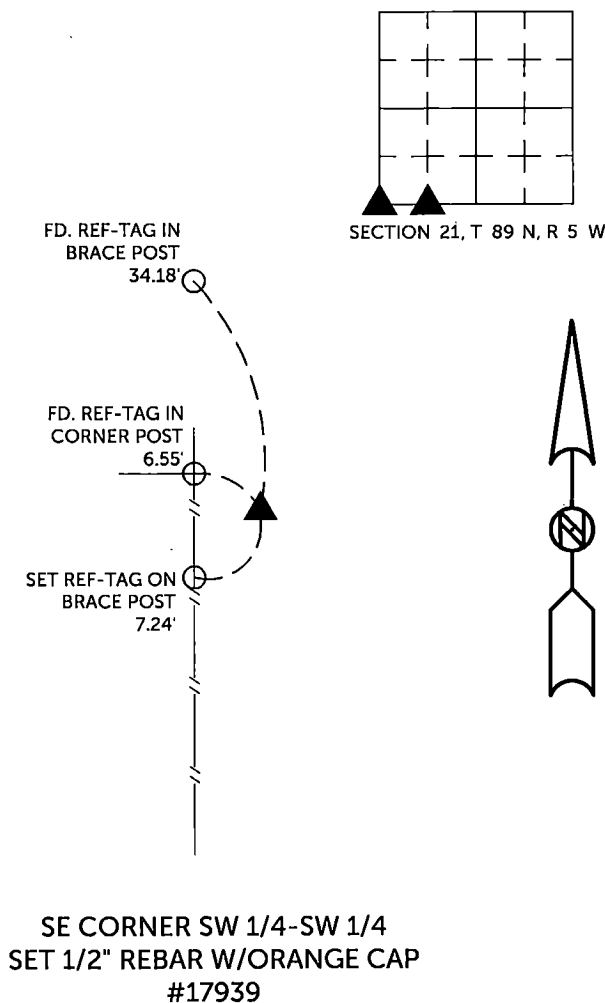
Land Survey Monuments situated in Section 21 , Township 89 North, Range 5 West of the Fifth Principal Meridian,  
Delaware County, Iowa.

Previously recorded in County Recorder's Office in \_\_\_\_\_ See Descriptions Below  
(book, page, document number, etc.)

SW CORNER: Found 1/2" rebar w/orange plastic cap #8419 as per corner certificate in Corner Monument Book 1, Page 310. This corner certificate is being reissued due to missing tie objects.

SE CORNER SW 1/4 - SW 1/4: Set 1/2" rebar w/orange plastic cap #17939 using distances from tie objects in Corner Monument Book 2, Page 68. Original monument is missing.

(Show a minimum of three reference ties to durable physical objects, relevant monuments and physical conditions that will enable recovery of the corner.)



TIES ARE TO PLAT      DELAWARE COUNTY FAIRGROUNDS ADDITION  
IN SECTION 21, T 89 N, R 5 W

BURRINGTON GROUP, INC. PROJECT NO. 22-108

I HEREBY CERTIFY THAT THIS LAND SURVEYING DOCUMENT  
WAS PREPARED AND THE RELATED SURVEY WORK WAS  
PERFORMED BY ME OR UNDER MY DIRECT PERSONAL  
SUPERVISION AND THAT I AM A DULY LICENSED PROFESSIONAL  
LAND SURVEYOR UNDER THE LAWS OF THE STATE OF IOWA.

SEAL COVERS THIS SHEET ONLY

  
Randall L. Rattenborg, P.L.S.

**License #17939**

Date \_\_\_\_\_

My license renewal date is December 31, 2023

List Corners to be Indexed:                      Section    Township    Range

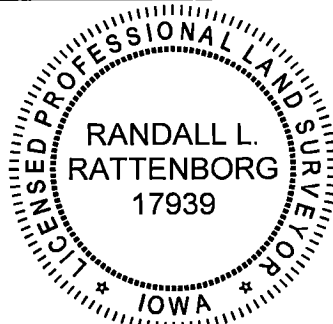
SW CORNER

21

T 89 N

R 5 W

SE CORNER SW 1/4 - SW 1/4



**BURRINGTON GROUP, INC.**

Civil Engineering | Land Surveying  
105 W. Main Street Manchester, Iowa 52057