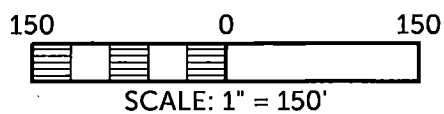




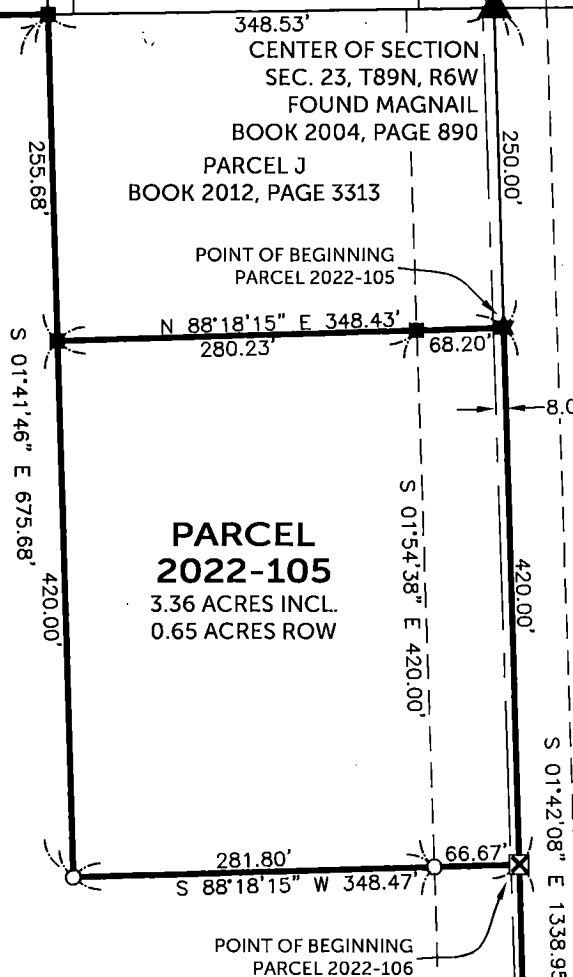
PARCEL 2022-105, PART OF THE NE 1/4 - SW 1/4  
PARCEL 2022-106, PART OF THE NE 1/4 - SW 1/4 AND PART OF THE SE 1/4 - SW 1/4  
SEC. 23, T89N, R6W OF THE FIFTH P.M., DELAWARE COUNTY, IOWA

PARCEL G BK. 2009, PG. 1353 N 89°14'14" E 1342.07' (R-S 89°11'04" W)  
993.54'

NW CORNER NE 1/4-SW 1/4  
SEC. 23, T89N, R6W  
FOUND 3/4" PIPE  
BOOK 2020, PAGE 4056



PARCEL 2022-106  
38.18 ACRES INCL.  
1.59 ACRES ROW



NE 1/4 - SW 1/4

35.46 ACRES INCL.  
1.10 ACRES ROW

0.78 ACRES

(R-N 87°56'01" E)  
S 87°59'12" W 310.00'

PARCEL K  
BK. 2012, PG. 3916

PARCEL E  
BOOK 2008, PAGE 2534

1.94 ACRES INCL.  
0.49 ACRES ROW

SE CORNER NE 1/4-SW 1/4  
SEC. 23, T89N, R6W  
FOUND PK NAIL W/ ALUM  
CAP #8419  
BOOK 1999, PAGE 2406

CANDLE ROAD - FORMER INDEPENDENCE & MCCOUNTS ROAD

SE 1/4 - SW 1/4

LEGEND

- ▲ SECTION CORNER
- FOUND 1/2" REBAR w/  
ORANGE CAP #8419
- FOUND 1/2" REBAR w/  
ORANGE CAP #17939
- ⊙ FOUND 1.5" I.D. IRON PIPE  
(UNLESS NOTED)
- ⊗ FOUND CUT "X"
- ★ FOUND MAGNAIL
- SET 1/2" REBAR w/  
ORANGE CAP PLS 17939
- ⊗ SET CUT "X"
- SECTION LINE
- QUARTER LINE
- QTR.-QTR. LINE
- FENCE LINE
- CENTER LINE
- EASEMENT OR ROW LINE
- PARCEL BOUNDARY
- BOUNDARY ESTABLISHED  
RECORDED AS

SW CORNER SE 1/4-SW 1/4  
SEC. 23, T89N, R6W  
FOUND 1.5" PIPE  
BOOK 2012, PAGE 3919