



Book 2022 Page 2462

Document 2022 2462 Type 06 007 Pages 1
Date 8/19/2022 Time 9:14:54AM
Rec Amt \$7.00

Daneen Schindler, RECORDER/REGISTRAR
DELAWARE COUNTY IOWA

PREPARED BY: RANDALL L. RATTENBORG 105 WEST MAIN STREET MANCHESTER, IA 52057, 563-927-2434

UNITED STATES PUBLIC LAND SURVEY CORNER CERTIFICATE

Land Survey Monuments situated in Section 2 , Township 88 North, Range 5 West of the Fifth Principal Meridian,
Delaware County, Iowa.

Previously recorded in County Recorder's Office in See Descriptions Below
(book, page, document number, etc.)

NW CORNER: Found 1/2" rebar with orange cap #8419. Corner certificate being issued due to missing tie objects. Previously recorded in Book 2004, Page 2848.

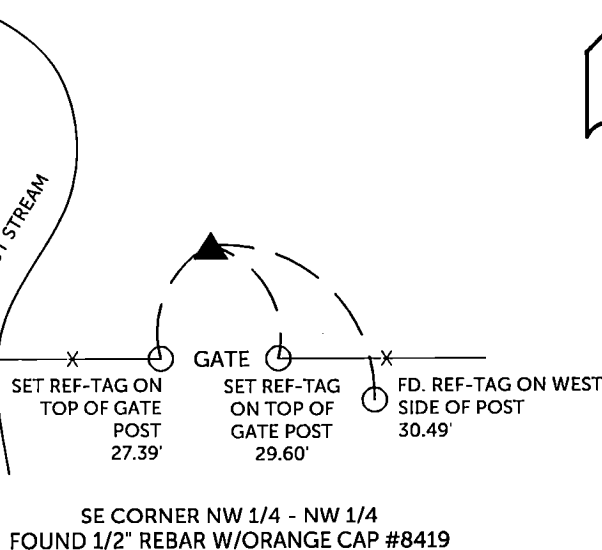
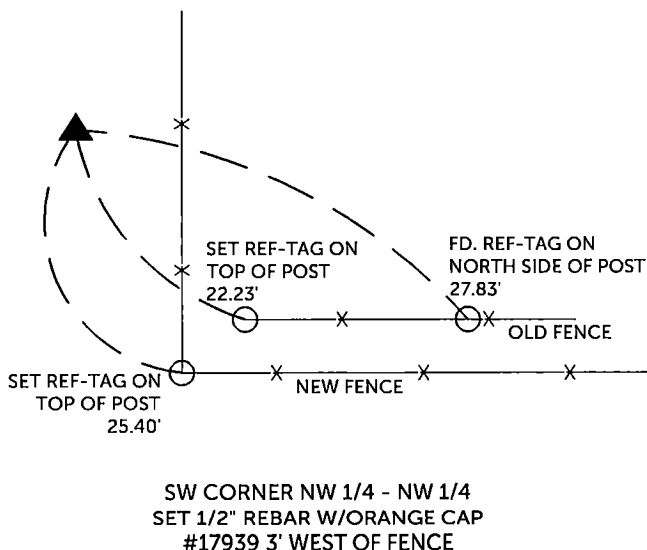
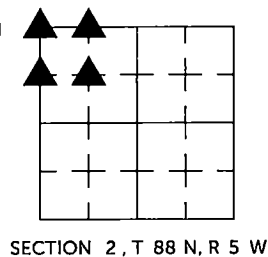
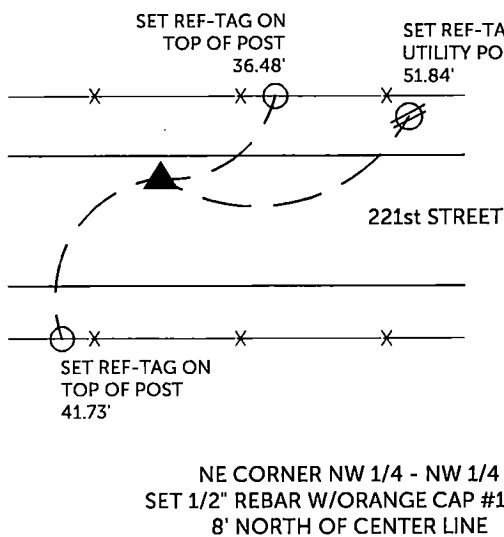
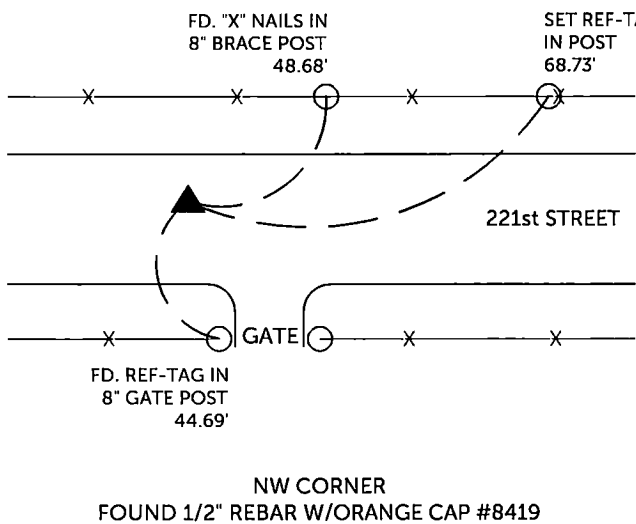
SW CORNER NW 1/4 - NW 1/4: Found 1/2" rebar with orange cap #17939 laid over. Reset monument in original location and re-tied. Previously recorded in Book 2004, Page 2847.

SE CORNER NW 1/4 - NW 1/4: Found 1/2" rebar with orange cap #17939. Corner certificate being reissued due to missing tie objects. Previously recorded in Book 2004, Page 2847

NE CORNER NW 1/4 - NW 1/4: Set 1/2" rebar with orange cap #17939 proportional between N 1/4 corner and NW corner.

PLAN VIEW

(Show a minimum of three reference ties to durable physical objects, relevant monuments and physical conditions that will enable recovery of the corner.)



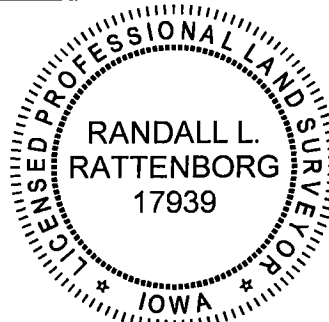
TIES ARE TO PLAT PARCEL 2022-98 & PARCEL 2022-99
IN SECTION 2, T 88 N, R 5 W

BURRINGTON GROUP, INC. PROJECT NO. 22-038

I HEREBY CERTIFY THAT THIS LAND SURVEYING DOCUMENT
WAS PREPARED AND THE RELATED SURVEY WORK WAS
PERFORMED BY ME OR UNDER MY DIRECT PERSONAL
SUPERVISION AND THAT I AM A DULY LICENSED PROFESSIONAL
LAND SURVEYOR UNDER THE LAWS OF THE STATE OF IOWA.

	8/19/2022
Randall L. Rattenborg, P.L.S.	License #17939
My license renewal date is December 31, 2023	
List Corners to be Indexed:	Section Township Range
NW CORNER	2 T 88 N R 5 W
NE CORNER NW 1/4 - NW 1/4	
SE CORNER NW 1/4 - NW 1/4	
SW CORNER NW 1/4 - NW 1/4	

SEAL COVERS THIS SHEET ONLY



BURRINGTON GROUP, INC.
Civil Engineering | Land Surveying
105 W. Main Street Manchester, Iowa 52057