



Book 2022 Page 2461

Document 2022 2461 Type 06 007 Pages 1

Date 8/19/2022 Time 9:14:44AM

Rec Amt \$7.00

Daneen Schindler, RECORDER/REGISTRAR
DELAWARE COUNTY IOWA

PREPARED BY: RANDALL L. RATTENBORG 105 WEST MAIN STREET MANCHESTER, IA 52057, 563-927-2434

UNITED STATES PUBLIC LAND SURVEY CORNER CERTIFICATE

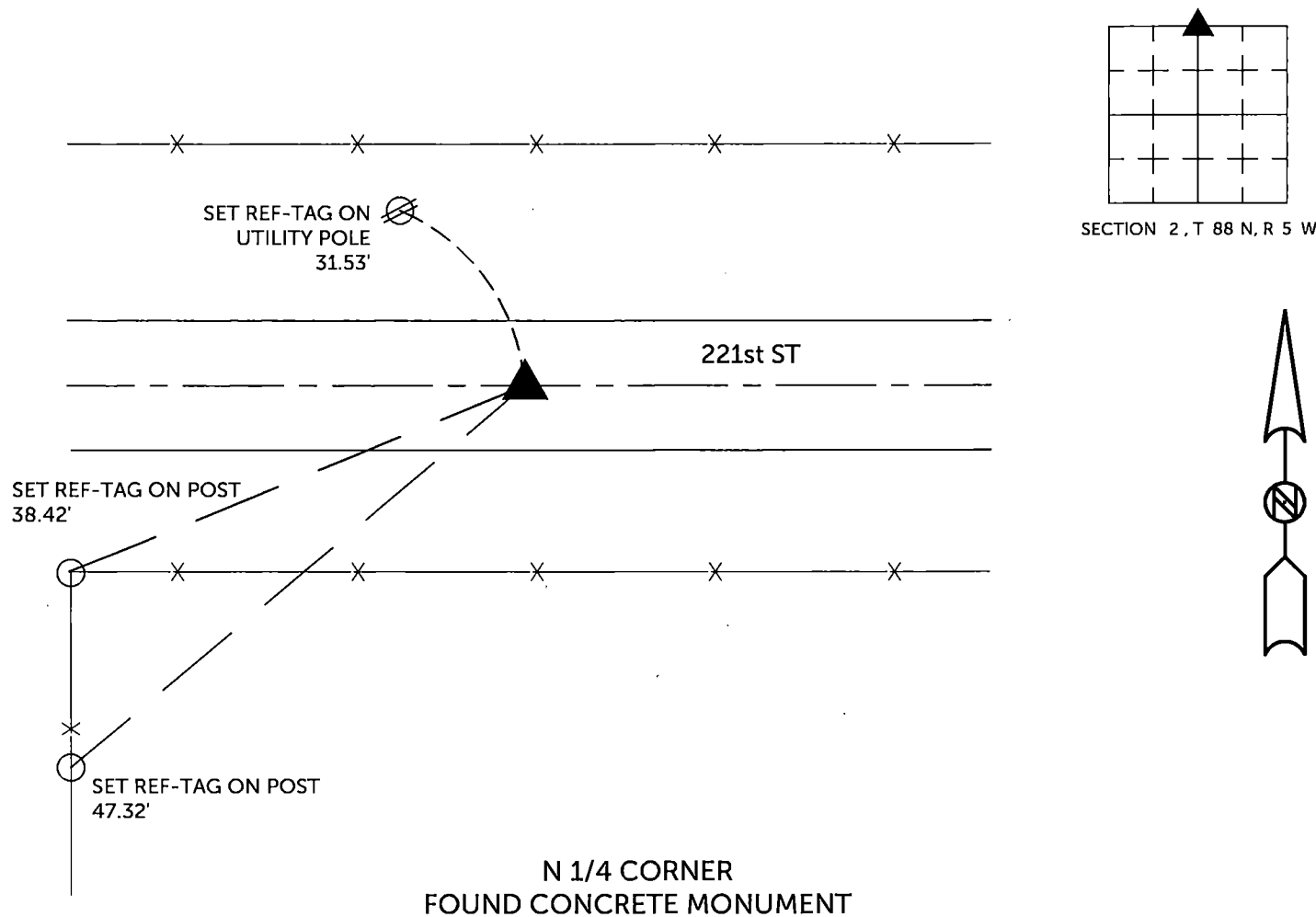
Land Survey Monuments situated in Section 2 , Township 88 North, Range 5 West of the Fifth Principal Meridian,
Delaware County, Iowa.

Previously recorded in County Recorder's Office in _____ Not Recorded
(book, page, document number, etc.)

N 1/4 Corner: Found concrete monument as shown in IDOT Land Corner Survey by D.A Sparks (PLS #3436) dated January 10, 1968 and revised by Roland Popelka (PLS #5898) dated Nov. 15, 1971.

PLAN VIEW

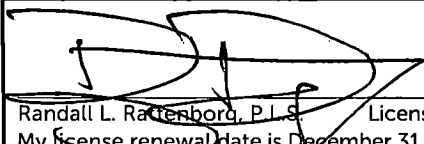
(Show a minimum of three reference ties to durable physical objects, relevant monuments and physical conditions that will enable recovery of the corner.)



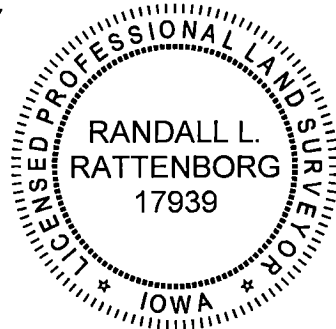
TIES ARE TO PLAT PARCEL 2022-98 & PARCEL 2022-99
IN SECTION 2, T 88 N, R 5 W

BURRINGTON GROUP, INC. PROJECT NO. 22-038

I HEREBY CERTIFY THAT THIS LAND SURVEYING DOCUMENT
WAS PREPARED AND THE RELATED SURVEY WORK WAS
PERFORMED BY ME OR UNDER MY DIRECT PERSONAL
SUPERVISION AND THAT I AM A DULY LICENSED PROFESSIONAL
LAND SURVEYOR UNDER THE LAWS OF THE STATE OF IOWA.


Randall L. Rattenborg, P.L.S. License #17939 Date 8/19/2022
My license renewal date is December 31, 2023
List Corners to be Indexed: Section Township Range
N 1/4 CORNER 2 T 88 N R 5 W

SEAL COVERS THIS SHEET ONLY



BURRINGTON GROUP, INC.

Civil Engineering | Land Surveying
105 W. Main Street Manchester, Iowa 52057