



Daneen Schindler, RECORDER/REGISTRAR
DELAWARE COUNTY IOWA

RM
MOHN SURVEYING INC. ROGER R. MOHN 1890 GREAT RIVER ROAD LANSING, IOWA 52151 (563) 538-4067

TIES. DWG R. Trimble

SLSI 9-90

UNITED STATES PUBLIC LAND SURVEY CORNER CERTIFICATE

OF

Land Survey Monuments situated in Section 7, Township 90 North, Range 6 West, of the Fifth Principal Meridian, Delaware County, Iowa. Previously recorded in no record on file in County Recorder's Office.

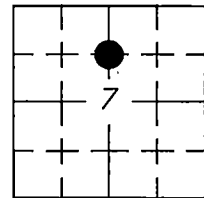
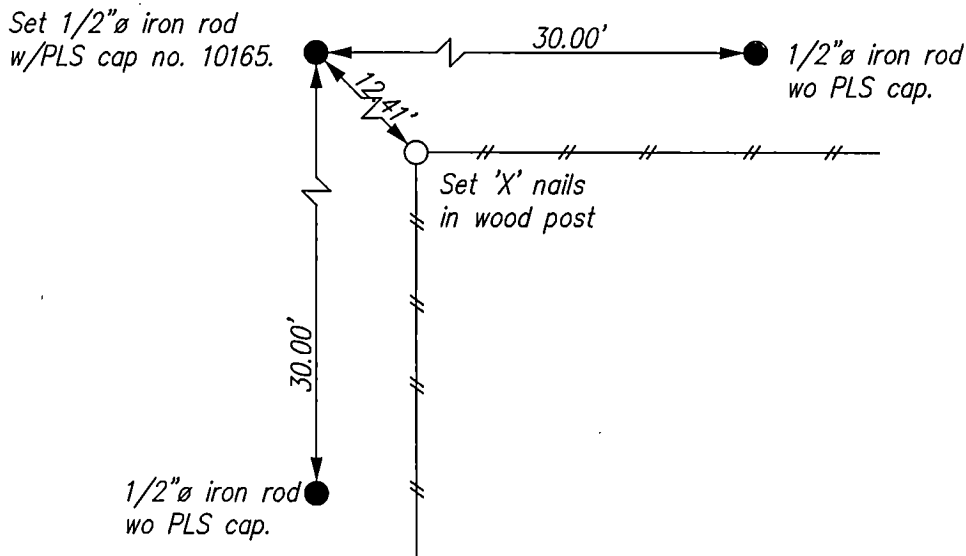
(book, page, document number, etc.)

(Show reason for preparing this certificate, the evidence and detailed procedures used in establishing the corner positions and monumentation found or placed.)

Monument Description and Remarks: Found no record of previous corner monumentation. Established corner position at the midpoint of the west line Section 18. Searched area with magnetic locator and probe but found nothing. Set 1/2"Ø iron rod with PLS cap no. 10165 at the computed position.

PLAN - VIEW

(Show a minimum of three reference ties to durable physical objects, relevant monuments and physical conditions that will enable recovery of the corner.)



GRID STATE PLANE COORDINATES

N=3696873.68 E=5433364.19

Coordinates are based on the Iowa State Plane Coordinate System North Zone (1401) Horizontal NAD 83 (2011).

I hereby certify that this land surveying document was prepared by me or under my direct personal supervision and that I am a duly Registered Land Surveyor under the laws of the state of Iowa.

Roger R. Mohn 7/30, 2022
ROGER R. MOHN, P.E. & L.S. Iowa Registration No. 10165
My registration expires December 31, 20 22

List Corners to be Indexed			
Corners	Section	Twp	Range
NW Cor. of SW1/4-NE1/4	7	90N	6W

