



Book 2022 Page 2205

Document 2022 2205 Type 06 007 Pages 1
Date 7/21/2022 Time 8:35:16AM
Rec Amt \$7.00

Daneen Schindler, RECORDER/REGISTRAR
DELAWARE COUNTY IOWA

PREPARED BY: RANDALL L. RATTENBORG 105 WEST MAIN STREET MANCHESTER, IA 52057, 563-927-2434

UNITED STATES PUBLIC LAND SURVEY CORNER CERTIFICATE

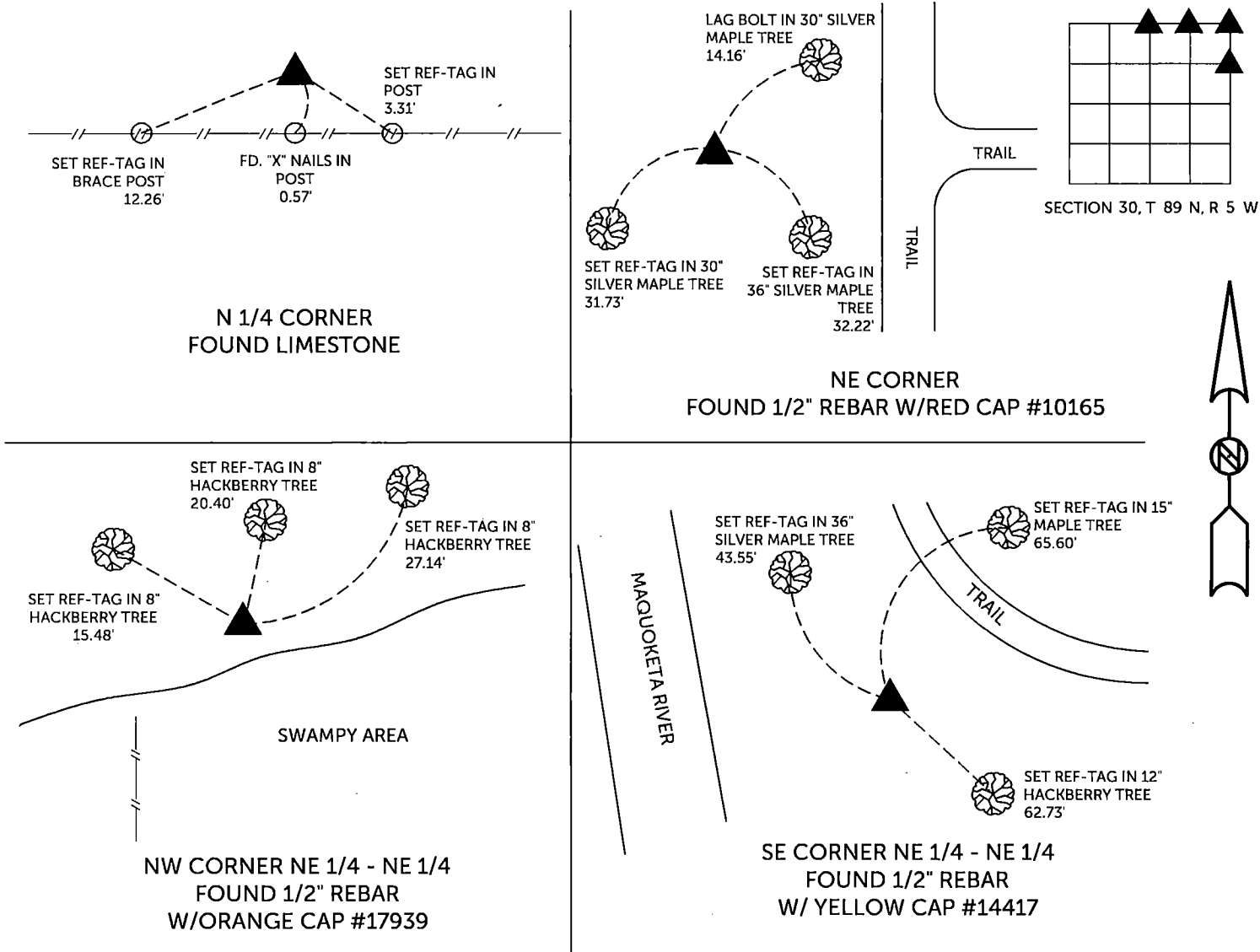
Land Survey Monuments situated in Section 30 , Township 89 North, Range 5 West of the Fifth Principal Meridian,
Delaware County, Iowa.

Previously recorded in County Recorder's Office in See Descriptions
(book, page, document number, etc.)

- N 1/4 CORNER, Found Limestone as per Corner Certificate recorded in Corner Tie Book 2, Page 17
- NW CORNER NE 1/4-NE 1/4, Found 1/2" rebar w/orange cap #17939 as per Corner Certificate recorded in Book 2002, Page 4221.
- NE CORNER, Found 1/2" rebar w/red cap #10165 as per plat of Ridgeway Acres Second Subdivision recorded in Book 2011, Page 1122
- SE CORNER NE 1/4 - NE 1/4, Found 1/2" rebar w/yellow cap #14417 as per corner certificate recorded in Book 2016, Page 646

PLAN VIEW

(Show a minimum of three reference ties to durable physical objects, relevant monuments and physical conditions that will enable recovery of the corner.)



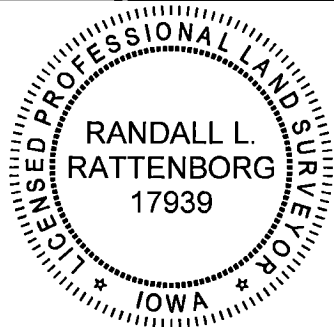
TIES ARE TO PLAT DEER FIELD FIFTH ADDITION
IN SECTION 30, T 89 N, R 5 W

BURRINGTON GROUP, INC. PROJECT NO. 22-033

I HEREBY CERTIFY THAT THIS LAND SURVEYING DOCUMENT
WAS PREPARED AND THE RELATED SURVEY WORK WAS
PERFORMED BY ME OR UNDER MY DIRECT PERSONAL
SUPERVISION AND THAT I AM A DULY LICENSED PROFESSIONAL
LAND SURVEYOR UNDER THE LAWS OF THE STATE OF IOWA.

	7/20/2022
Randall L. Rattenborg, P.L.S.	License #17939
My license renewal date is December 31, 2023	
List Corners to be Indexed:	Section Township Range
SE CORNER NE 1/4 - NE 1/4	30 T 89N R 5 W
NE CORNER	
NW CORNER NE 1/4 - NE 1/4	
N 1/4 CORNER	

SEAL COVERS THIS SHEET ONLY



BURRINGTON GROUP, INC.
Civil Engineering | Land Surveying
105 W. Main Street Manchester, Iowa 52057