



Book 2022 Page 2144

Document 2022 2144 Type 06 007 Pages 1
Date 7/14/2022 Time 9:21:23AM
Rec Amt \$7.00

Daneen Schindler, RECORDER/REGISTRAR
DELAWARE COUNTY IOWA

PREPARED BY: RANDALL L. RATTENBORG 105 WEST MAIN STREET MANCHESTER, IA 52057, 563-927-2434

UNITED STATES PUBLIC LAND SURVEY CORNER CERTIFICATE

Land Survey Monuments situated in Section 36 , Township 89 North, Range 5 West of the Fifth Principal Meridian,
Delaware County, Iowa.

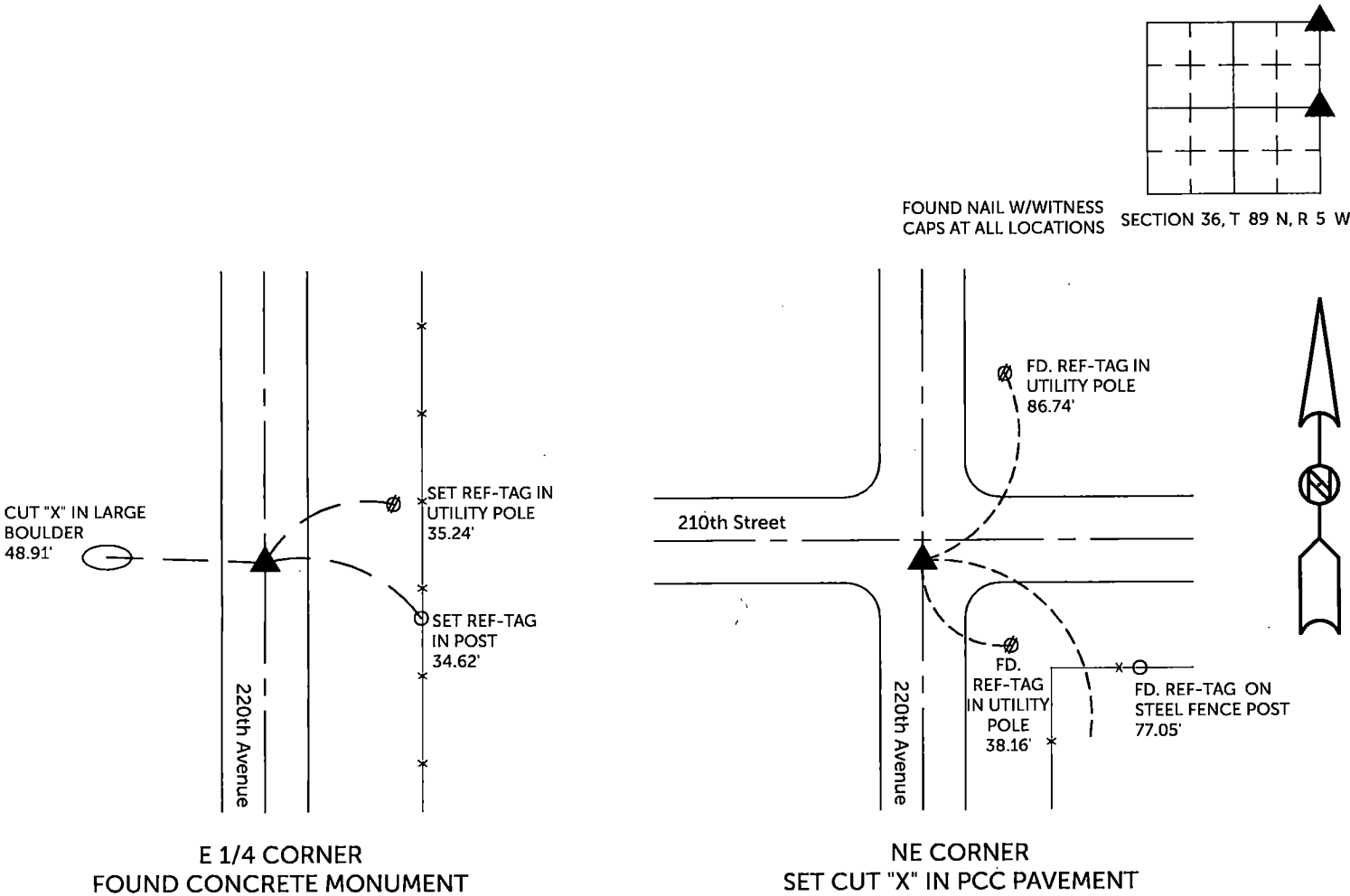
Previously recorded in County Recorder's Office in NE Corner - Bk 2009, Pg. 4043
(book, page, document number, etc.)

NE CORNER, Set cut "X" in PCC pavement using tie objects as per Book 2009, Page 4043.

E 1/4 CORNER, Found concrete monument

PLAN VIEW

(Show a minimum of three reference ties to durable physical objects, relevant monuments and physical conditions that will enable recovery of the corner.)

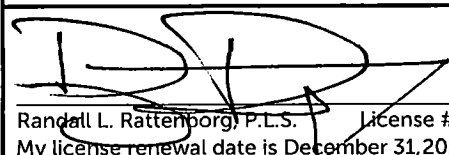


TIES ARE TO PLAT
IN SECTION 36, T 89 N, R 5 W

BURRINGTON GROUP, INC. PROJECT NO. 20-033

I HEREBY CERTIFY THAT THIS LAND SURVEYING DOCUMENT
WAS PREPARED AND THE RELATED SURVEY WORK WAS
PERFORMED BY ME OR UNDER MY DIRECT PERSONAL
SUPERVISION AND THAT I AM A DULY LICENSED PROFESSIONAL
LAND SURVEYOR UNDER THE LAWS OF THE STATE OF IOWA.

SEAL COVERS THIS SHEET ONLY


Randall L. Rattenborg, P.L.S. License #17939 Date 7/13/2022
My license renewal date is December 31, 2023
List Corners to be Indexed: Section Township Range
NE CORNER 36 T 89N R 5 W
E 1/4 CORNER



 **BURRINGTON GROUP, INC.**
Civil Engineering | Land Surveying
105 W. Main Street Manchester, Iowa 52057