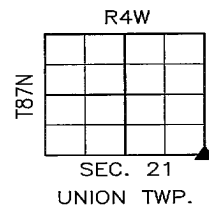
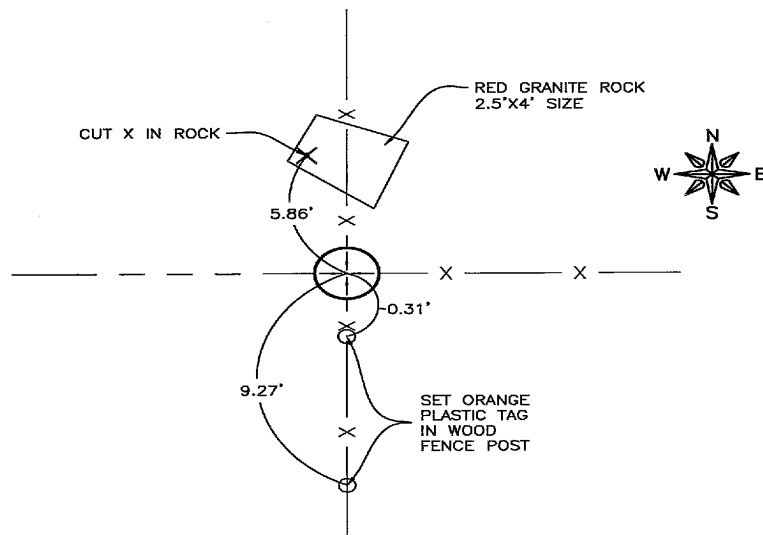


Recorded: 6/30/2022 at 3:19:15.0 PM
County Recording Fee: \$7.00
Iowa E-Filing Fee: \$3.13
Combined Fee: \$10.13
Revenue Tax:
Delaware County, Iowa
Daneen Schindler RECORDER
BK: 2022 PG: 2021

PREPARED BY/RETURN TO: FEHR GRAHAM, 221 E. MAIN ST., SUITE 301, MANCHESTER, IA 52057 - PH: 563-927-2060

UNITED STATES PUBLIC LAND SURVEY CORNER CERTIFICATE
DELAWARE COUNTY, IOWA
SECTION 21-T87N-R4W

SE CORNER OF
SEC. 21-87-4



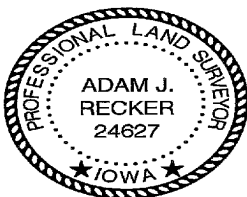
PREVIOUSLY RECORDED:
NO PREVIOUS CERTIFICATE ON FILE.

PURPOSE OF CERTIFICATE:
LOOKED AT DOUBLED THE DISTANCE DOWN FROM THE
E1/4 CORNER AND THE NE CORNER OF THE
SE1/4-SE1/4. SET MONUMENT AT FENCE
INTERSECTION.

MONUMENT DESCRIPTION AND ESTABLISHMENT:
SET 1/2"Ø REBAR W/2"Ø ALUMINUM CAP #24627

CORNERS TO BE INDEXED

CORNER	SECTION	TOWNSHIP	RANGE
(1) SE	21	87N	4W



I hereby certify that this land surveying document was prepared and the related survey work was performed by me or under my direct personal supervision and that I am a duly licensed Land Surveyor under the laws of the State of Iowa.

Adam J. Recker
Adam J. Recker, P.L.S.
License Number: 24627
My license renewal date is December 31, 2023.
Sheets covered by this seal: THIS SHEET ONLY

6-30-2022
Date

FEHR GRAHAM
ENGINEERING & ENVIRONMENTAL
© 2022 FEHR GRAHAM

ILLINOIS
IOWA
WISCONSIN

G:\C3D\22\22-611 Havana\22-611 SCC Y.dwg

JOB NUMBER:
22-611

SHEET NUMBER:
1 of 1