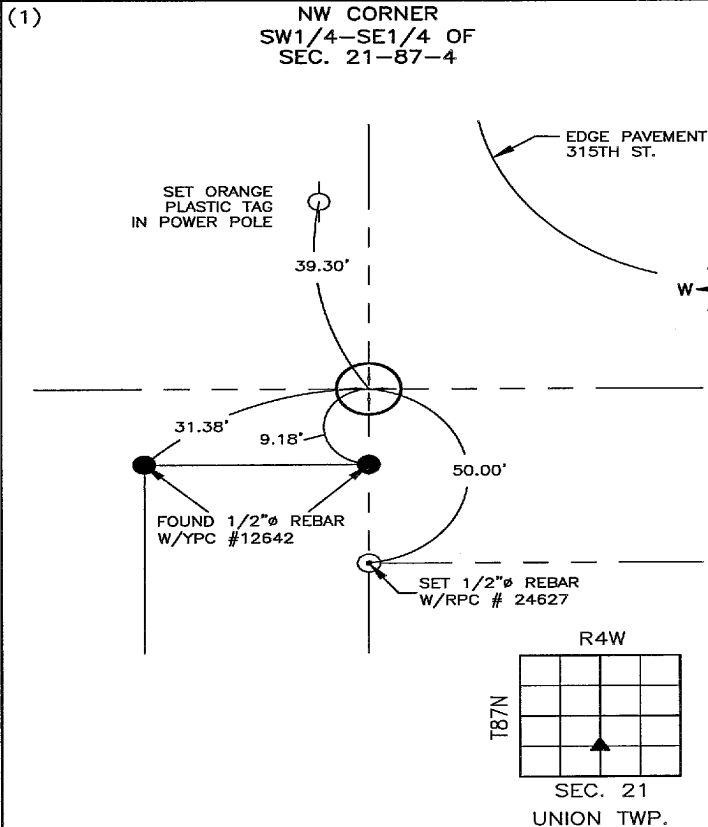


Recorded: 6/30/2022 at 3:19:14.0 PM  
County Recording Fee: \$7.00  
Iowa E-Filing Fee: \$3.13  
Combined Fee: \$10.13  
Revenue Tax:  
Delaware County, Iowa  
Daneen Schindler RECORDER  
BK: 2022 PG: 2020

PREPARED BY/RETURN TO: FEHR GRAHAM, 221 E. MAIN ST., SUITE 301, MANCHESTER, IA 52057 - PH: 563-927-2060

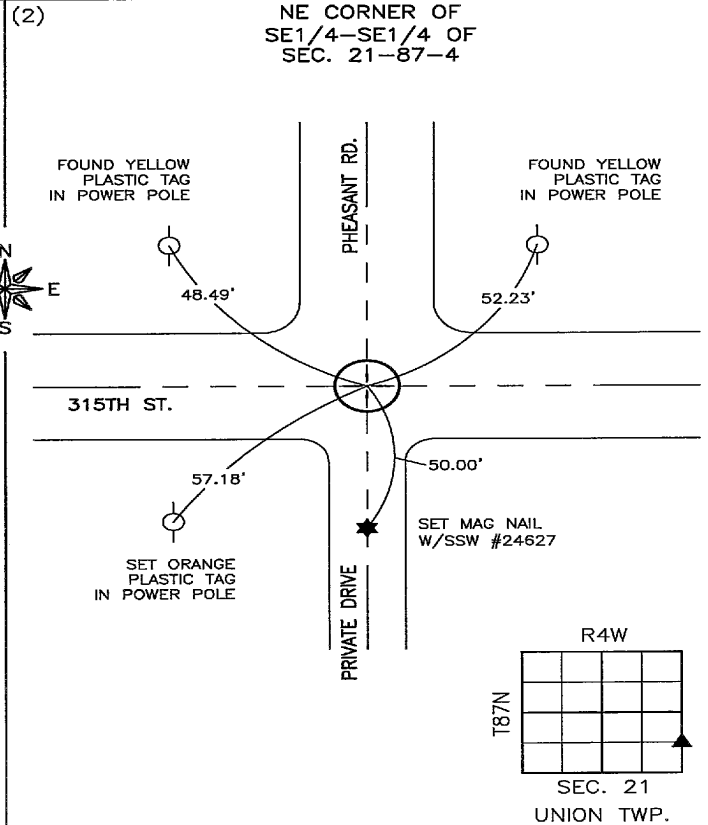
**UNITED STATES PUBLIC LAND SURVEY CORNER CERTIFICATE**  
**DELAWARE COUNTY, IOWA**  
**SECTION 21-T87N-R4W**



**PREVIOUSLY RECORDED:**  
NO PREVIOUS CERTIFICATE ON FILE.

**PURPOSE OF CERTIFICATE:**  
SET MONUMENT ONLINE BETWEEN THE CENTER OF SECTION AND THE S1/4 CORNER AND ON THE CENTERLINE ALIGNMENT OF 315TH STREET ACCORDING TO OLD ROAD RECORDS.

**MONUMENT DESCRIPTION AND ESTABLISHMENT:**  
SET 1/2" Ø REBAR W/2" Ø ALUMINUM CAP #24627



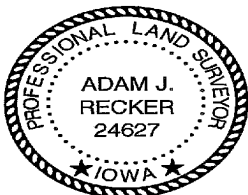
**PREVIOUSLY RECORDED:**  
IN BK. 2017, PG. 3455 IN COUNTY RECORDER'S OFFICE.

**PURPOSE OF CERTIFICATE:**  
PREVIOUS MONUMENT IS MISSING. SET MONUMENT IN FOUND MAG NAIL HOLE AND CHECKED LOCATION BY USED MONUMENT TIES.

**MONUMENT DESCRIPTION AND ESTABLISHMENT:**  
SET MAG NAIL W/STAINLESS STEEL WASHER #24627

**CORNERS TO BE INDEXED**

	CORNER	SECTION	TOWNSHIP	RANGE
(1)	NW of SW1/4-SE1/4	21	87N	4W
(2)	NE of SE1/4-SE1/4	21	87N	4W



I hereby certify that this land surveying document was prepared and the related survey work was performed by me or under my direct personal supervision and that I am a duly licensed Land Surveyor under the laws of the State of Iowa.

*Adam J. Recker* 6-30-2022  
Adam J. Recker, P.L.S.  
License Number: 24627  
My license renewal date is December 31, 2023.  
Sheets covered by this seal: THIS SHEET ONLY

**FEHR GRAHAM**  
ENGINEERING & ENVIRONMENTAL  
© 2022 FEHR GRAHAM

ILLINOIS  
IOWA  
WISCONSIN

G:\C3D\22\22-611 Havens\22-611 SCC R-T.dwg

JOB NUMBER:  
22-611

SHEET NUMBER:  
1 of 1