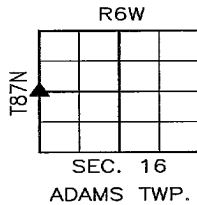
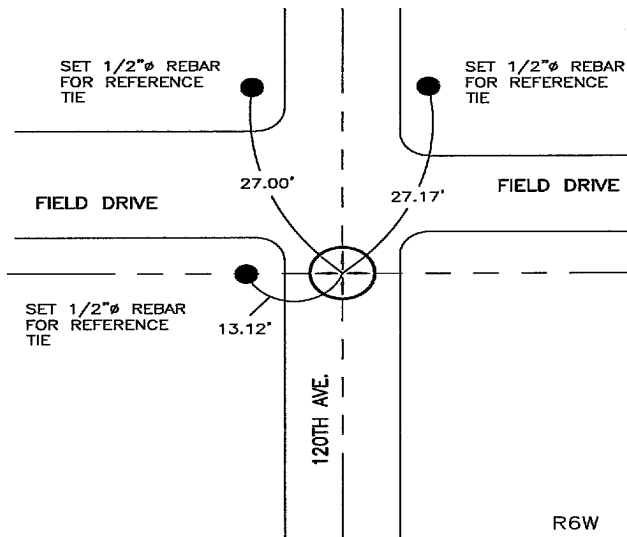


Recorded: 6/30/2022 at 3:05:58.0 PM
County Recording Fee: \$7.00
Iowa E-Filing Fee: \$3.13
Combined Fee: \$10.13
Revenue Tax:
Delaware County, Iowa
Daneen Schindler RECORDER
BK: 2022 PG: 2014

PREPARED BY/RETURN TO: FEHR GRAHAM, 221 E. MAIN ST., SUITE 301, MANCHESTER, IA 52057 - PH: 563-927-2060

UNITED STATES PUBLIC LAND SURVEY CORNER CERTIFICATE
DELAWARE COUNTY, IOWA
SECTION 16-T87N-R6W

(1) W1/4 CORNER OF
SEC. 16-87-6

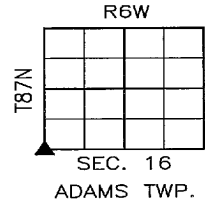
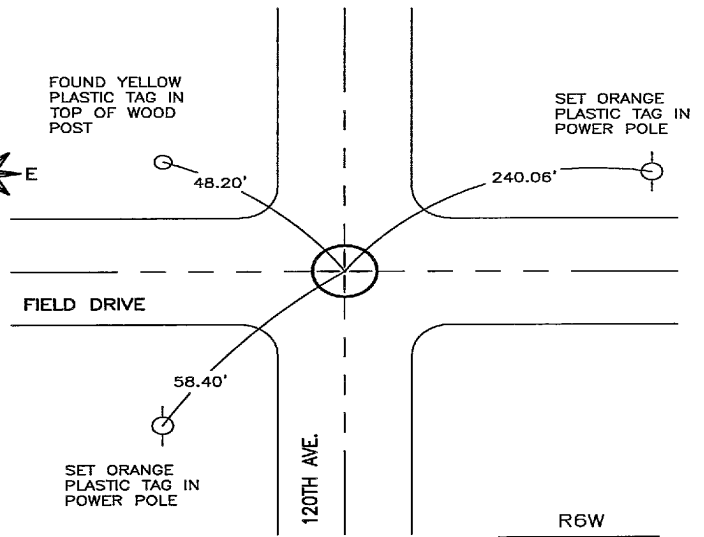


PREVIOUSLY RECORDED:
NO PREVIOUS CERTIFICATE ON FILE.

PURPOSE OF CERTIFICATE:
LOOKED AT ONLINE AND MIDPOINT POSITION BETWEEN
THE NW CORNER AND THE SW CORNER. SET
MONUMENT AT INTERSECTION OF FENCELINE AND
CENTER OF ROAD.

MONUMENT DESCRIPTION AND ESTABLISHMENT:
SET 1/2"Ø REBAR W/2"Ø ALUMINUM CAP #24627

(2) SW CORNER OF
SEC. 16-87-6



PREVIOUSLY RECORDED:
IN BK. 2004, PG. 4857 IN COUNTY RECORDER'S
OFFICE.

PURPOSE OF CERTIFICATE:
FILING NEW CERTIFICATE DUE TO MISSING TIES FROM
PREVIOUS CERTIFICATE.

MONUMENT DESCRIPTION AND ESTABLISHMENT:
FOUND 1/2"Ø REBAR W/2"Ø ALUMINUM CAP #16961

CORNERS TO BE INDEXED

	CORNER	SECTION	TOWNSHIP	RANGE
(1)	W1/4	16	87N	6W
(2)	SW	16	87N	6W



I hereby certify that this land surveying document
was prepared and the related survey work was
performed by me or under my direct personal
supervision and that I am a duly licensed Land
Surveyor under the laws of the State of Iowa.

Adam J. Recker 6-30-2022
Adam J. Recker, P.L.S.
License Number: 24627
My license renewal date is December 31, 2023.
Sheets covered by this seal: THIS SHEET ONLY

FEHR GRAHAM
ENGINEERING & ENVIRONMENTAL
© 2022 FEHR GRAHAM

ILLINOIS
IOWA
WISCONSIN

G:\C3D\22-698 Smith\22-698 SCC KU.dwg

JOB NUMBER:
22-698

SHEET NUMBER:
1 of 1