



Book 2022 Page 1928

Document 2022 1928 Type 06 007 Pages 1
Date 6/23/2022 Time 1:20:35PM
Rec Amt \$7.00

Daneen Schindler, RECORDER/REGISTRAR
DELAWARE COUNTY IOWA

PREPARED BY: RANDALL L. RATTENBORG 105 WEST MAIN STREET MANCHESTER, IA 52057, 563-927-2434

UNITED STATES PUBLIC LAND SURVEY CORNER CERTIFICATE

Land Survey Monuments situated in Section 3 , Township 90 North, Range 5 West of the Fifth Principal Meridian,
Delaware County, Iowa.

Previously recorded in County Recorder's Office in None

(book, page, document number, etc.)

SW Cor. NW 1/4-SE 1/4, Set 1/2Ø rebar with orange plastic cap PLS 17939 equidistant and on-line between the center of section and the south quarter corner.

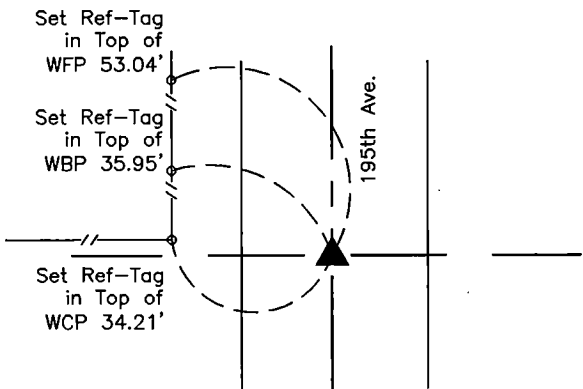
SE Cor. NW 1/4-SE 1/4, Set 1/2Ø rebar with orange plastic cap PLS 17939 at the mathematical intersection of the southeast quarter.

NE Cor. NW 1/4-SE 1/4, Set 1/2Ø rebar with orange plastic cap PLS 17939 equidistant and on-line between the center of section and the east quarter corner.

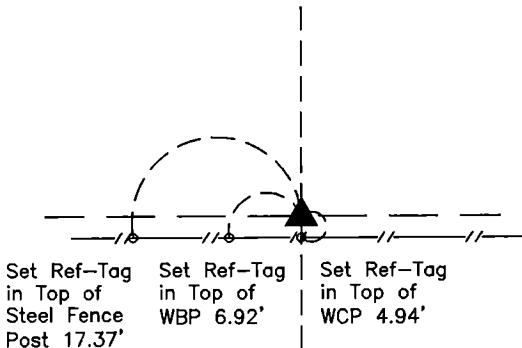
SE Cor. NE 1/4-SE 1/4, Set 1/2Ø rebar with orange plastic cap PLS 17939 equidistant and on-line between the center of section and the east quarter corner

PLAN VIEW

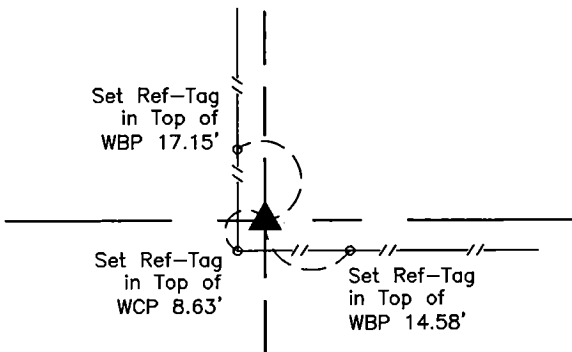
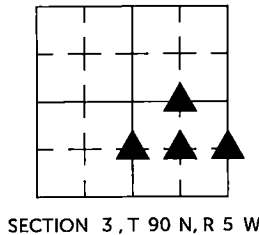
(Show a minimum of three reference ties to durable physical objects, relevant monuments and physical conditions that will enable recovery of the corner.)



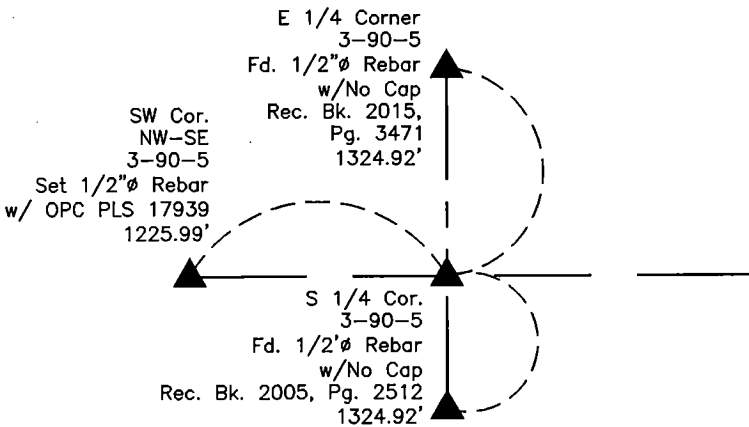
SW Cor. NW 1/4-SE 1/4
SET 1/2" REBAR W/ORANGE CAP #17939



SE Cor. NW 1/4-SE 1/4
SET 1/2" REBAR W/ORANGE CAP #17939



NE Cor. NW 1/4-SE 1/4
SET 1/2" REBAR W/ORANGE CAP #17939



SE Cor. NE 1/4-SE 1/4
SET 1/2" REBAR W/ORANGE CAP #17939

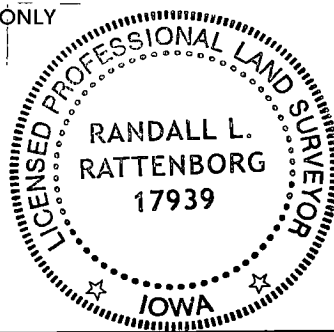
TIES ARE TO PLAT
IN SECTION 3, T 90 N, R 5 W

BURRINGTON GROUP, INC. PROJECT NO. 22-069

I HEREBY CERTIFY THAT THIS LAND SURVEYING DOCUMENT WAS PREPARED AND THE RELATED SURVEY WORK WAS PERFORMED BY ME OR UNDER MY DIRECT PERSONAL SUPERVISION AND THAT I AM A DULY LICENSED PROFESSIONAL LAND SURVEYOR UNDER THE LAWS OF THE STATE OF IOWA.

SEAL COVERS THIS SHEET ONLY

Randall L. Rattenborg, P.L.S. License #17939 Date 6/17/2022
My license renewal date is December 31, 2023
List Corners to be Indexed: Section Township Range
SW Cor, NW-SE 3 T 90N R 5 W
SE Cor. NW-SE
SE Cor. NE-SE
NE Cor. NW-SE



BURRINGTON GROUP, INC.
Civil Engineering | Land Surveying
105 W. Main Street Manchester, Iowa 52057