



Book 2022 Page 1855

Document 2022 1855 Type 06 007 Pages 1
Date 6/15/2022 Time 1:24:33PM
Rec Amt \$7.00

Daneen Schindler, RECORDER/REGISTRAR
DELAWARE COUNTY IOWA

PREPARED BY: RANDALL L. RATTENBORG 105 WEST MAIN STREET MANCHESTER, IA 52057, 563-927-2434

UNITED STATES PUBLIC LAND SURVEY CORNER CERTIFICATE

Land Survey Monuments situated in Section 14 , Township 87 North, Range 6 West of the Fifth Principal Meridian,
DELAWARE County, Iowa.

Previously recorded in County Recorder's Office in SEE DESCRIPTIONS
(book, page, document number, etc.)

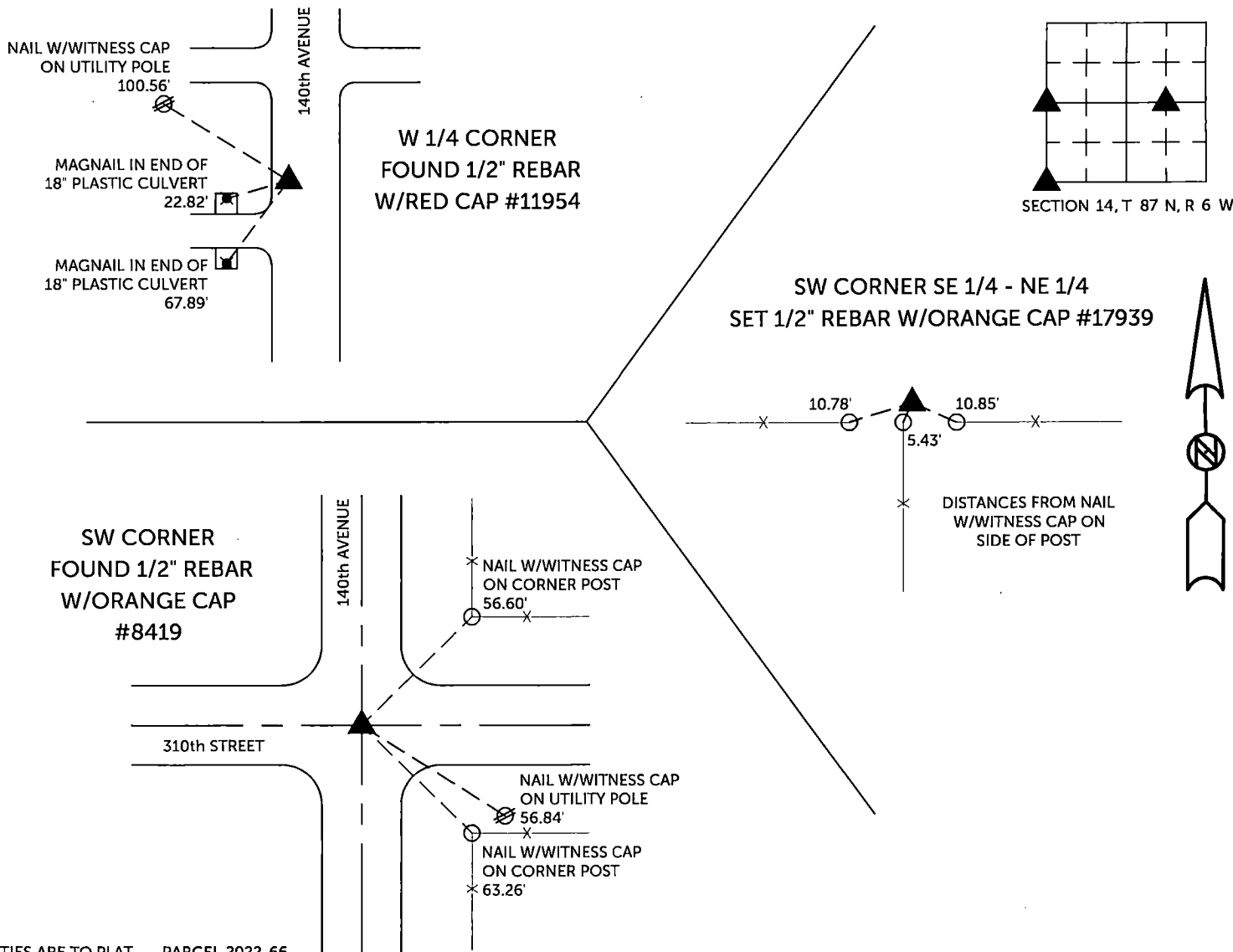
W 1/4 CORNER, Found 1/2" rebar w/red cap #11954 as per corner certificate recorded in Book 2005, Page 1000. Preparing this corner certificate due to missing corner tie objects.

SW CORNER, Found 1/2" rebar w/orange cap #8419 as per corner certificate recorded in Corner Tie Book 1, Page 277. Preparing this corner certificate due to missing corner tie objects.

SW CORNER SE 1/4 - NE 1/4, Set 1/2" rebar w/orange cap #17939 at proportionate location between the E 1/4 Corner and the Center of Section.

PLAN VIEW

(Show a minimum of three reference ties to durable physical objects, relevant monuments and physical conditions that will enable recovery of the corner.)

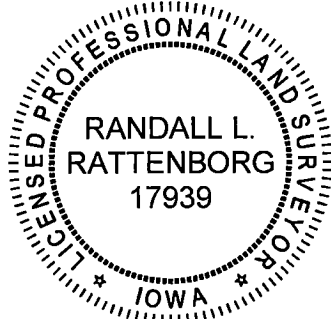


TIES ARE TO PLAT PARCEL 2022-66
IN SECTION 14, T 87 N, R 6 W

BURRINGTON GROUP, INC. PROJECT NO. 22-033

I HEREBY CERTIFY THAT THIS LAND SURVEYING DOCUMENT
WAS PREPARED AND THE RELATED SURVEY WORK WAS
PERFORMED BY ME OR UNDER MY DIRECT PERSONAL
SUPERVISION AND THAT I AM A DULY LICENSED PROFESSIONAL
LAND SURVEYOR UNDER THE LAWS OF THE STATE OF IOWA.

SEAL COVERS THIS SHEET ONLY



[Signature]
Randall L. Rattenborg, P.L.S. License #17939 Date 6/15/2022
My license renewal date is December 31, 2023
List Corners to be Indexed: Section Township Range
W 1/4 CORNER 14 T 87N R 6 W
SW CORNER
SW CORNER SE 1/4 - NE 1/4

BURRINGTON GROUP, INC.
Civil Engineering | Land Surveying
105 W. Main Street Manchester, Iowa 52057