



Book 2022 Page 1854

Document 2022 1854 Type 06 007 Pages 1  
Date 6/15/2022 Time 1:24:19PM  
Rec Amt \$7.00

Daneen Schindler, RECORDER/REGISTRAR  
DELAWARE COUNTY IOWA

PREPARED BY: RANDALL L. RATTENBORG 105 WEST MAIN STREET MANCHESTER, IA 52057, 563-927-2434

UNITED STATES PUBLIC LAND SURVEY CORNER CERTIFICATE

Land Survey Monuments situated in Section 14 , Township 87 North, Range 6 West of the Fifth Principal Meridian,  
DELAWARE County, Iowa.

Previously recorded in County Recorder's Office in Not Recorded  
(book, page, document number, etc.)

NW CORNER NE 1/4 - NE 1/4, Set cut "X" in PCC pavement on the line between the NE Corner and NW Corner and 1334 feet west from NE Corner as per Easement recorded in LD Book 104, Page 85. This location lines up with the grass line for the residence at 1478 300th Street.

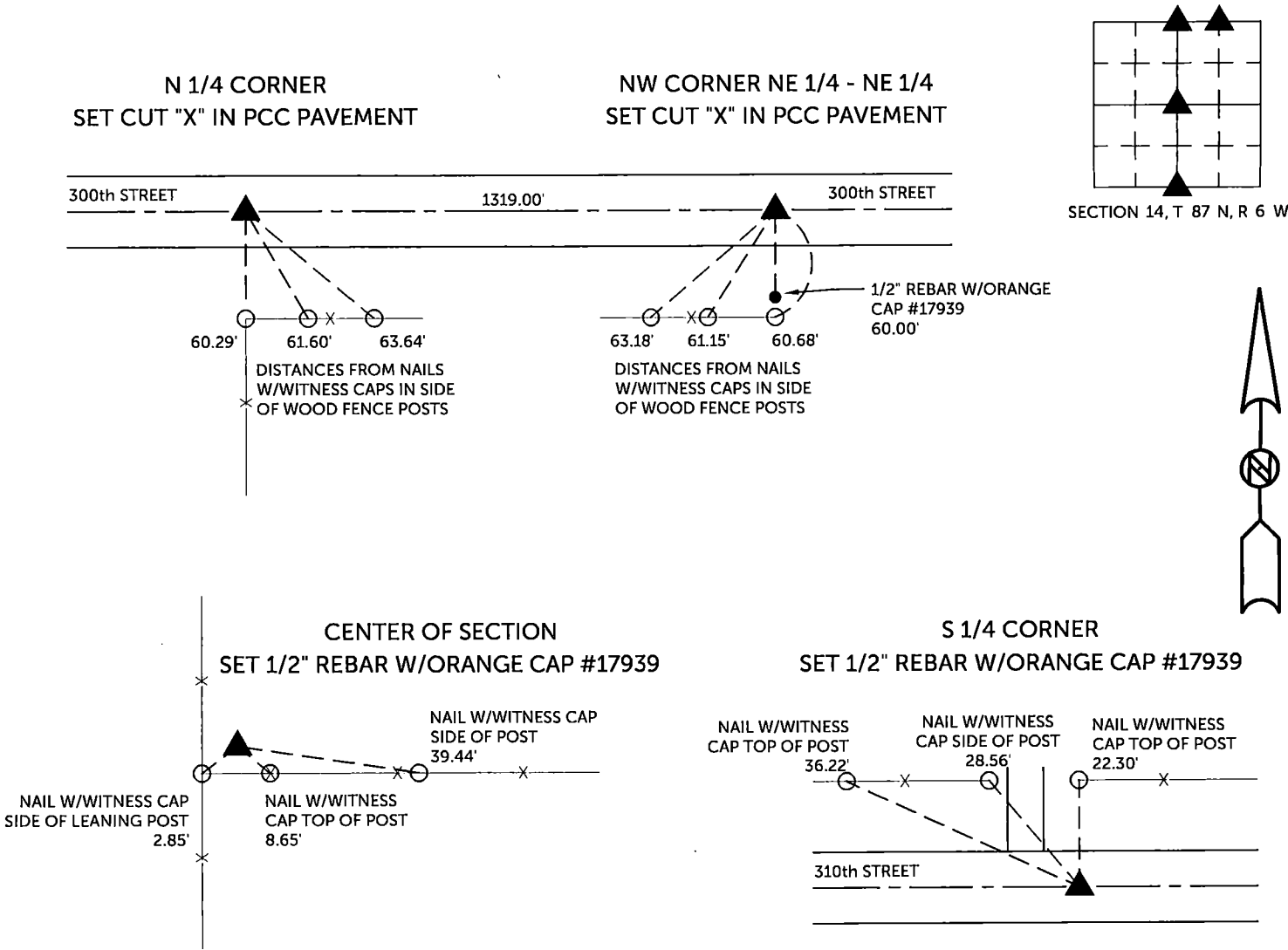
N 1/4 CORNER, Set cut "X" in PCC pavement on the line between the NE Corner and NW Corner and 1319 feet west from NW Corner NE1/4 - NE 1/4 as per Easement recorded in LD Book 104, Page 85. This location lines up with the North / South fences. Proportionate measurement does not fit the field evidence.

CENTER OF SECTION, Set 1/2" rebar w/orange cap #17939 at intersection of quarter lines.

S 1/4 CORNER, Set Set 1/2" rebar w/orange cap #17939 at proportionate location between the SE Corner and the SW Corner.

PLAN VIEW

(Show a minimum of three reference ties to durable physical objects, relevant monuments and physical conditions that will enable recovery of the corner.)

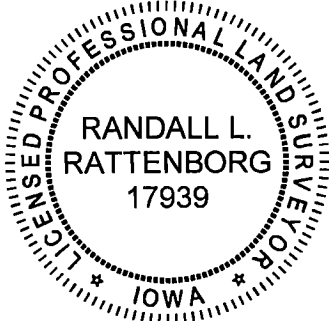


TIES ARE TO PLAT PARCEL 2022-66  
IN SECTION 14, T 87 N, R 6 W

BURRINGTON GROUP, INC. PROJECT NO. 22-033

I HEREBY CERTIFY THAT THIS LAND SURVEYING DOCUMENT  
WAS PREPARED AND THE RELATED SURVEY WORK WAS  
PERFORMED BY ME OR UNDER MY DIRECT PERSONAL  
SUPERVISION AND THAT I AM A DULY LICENSED PROFESSIONAL  
LAND SURVEYOR UNDER THE LAWS OF THE STATE OF IOWA.

SEAL COVERS THIS SHEET ONLY



Randall L. Rattenborg, P.L.S. License #17939 Date

My license renewal date is December 31, 2023

List Corners to be Indexed: Section Township Range

N 1/4 CORNER 14 T 87N R 6 W  
NW CORNER NE 1/4-NE 1/4  
CENTER OF SECTION  
S 1/4 CORNER



BURRINGTON GROUP, INC.

Civil Engineering | Land Surveying  
105 W. Main Street Manchester, Iowa 52057