



Book 2022 Page 1712
Document 2022 1712 Type 06 007 Pages 1
Date 6/01/2022 Time 1:17:11PM
Rec Amt \$7.00

Daneen Schindler, RECORDER/REGISTRAR
DELAWARE COUNTY IOWA

PREPARED BY: RANDALL L. RATTENBORG 105 WEST MAIN STREET MANCHESTER, IA 52057, 563-927-2434

UNITED STATES PUBLIC LAND SURVEY CORNER CERTIFICATE

Land Survey Monuments situated in Section 15 , Township 87 North, Range 5 West of the Fifth Principal Meridian,
Delaware County, Iowa.

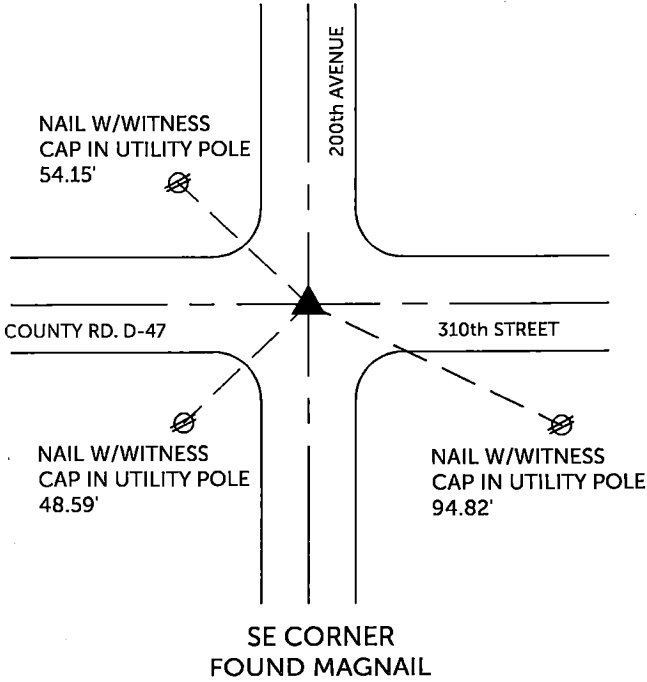
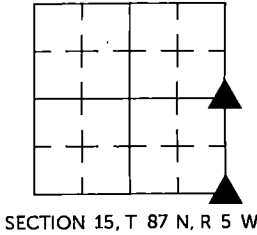
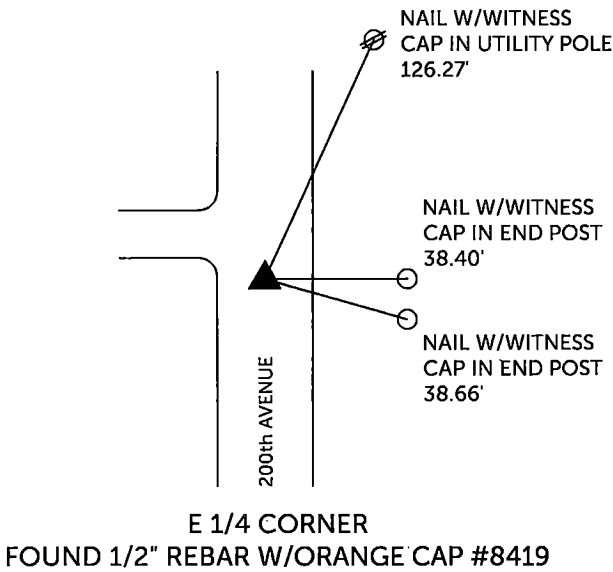
Previously recorded in County Recorder's Office in Corner Tie Book 2, Page 92 & Book 2006, Page 548
(book, page, document number, etc.)

E 1/4 CORNER, Found 1/2" rebar w/orange cap #8419. This corner certificate being done due to missing tie objects.

SE CORNER, Found Magnail. This corner certificate being done due to missing tie objects.

PLAN VIEW

(Show a minimum of three reference ties to durable physical objects, relevant monuments and physical conditions that will enable recovery of the corner.)



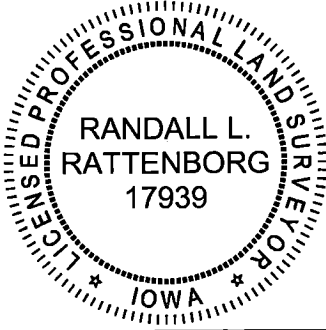
TIES ARE TO PLAT
IN SECTION 15, T 87 N, R 5 W

BURRINGTON GROUP, INC. PROJECT NO. 21-205

I HEREBY CERTIFY THAT THIS LAND SURVEYING DOCUMENT
WAS PREPARED AND THE RELATED SURVEY WORK WAS
PERFORMED BY ME OR UNDER MY DIRECT PERSONAL
SUPERVISION AND THAT I AM A DULY LICENSED PROFESSIONAL
LAND SURVEYOR UNDER THE LAWS OF THE STATE OF IOWA.

	5/27/2022
Randall L. Rattenborg, P.L.S.	License #17939
My license renewal date is December 31, 2023	
List Corners to be Indexed:	Section Township Range
E 1/4 CORNER	15 T 87N R 5 W
SE CORNER	

SEAL COVERS THIS SHEET ONLY



BURRINGTON GROUP, INC.
Civil Engineering | Land Surveying
105 W. Main Street Manchester, Iowa 52057