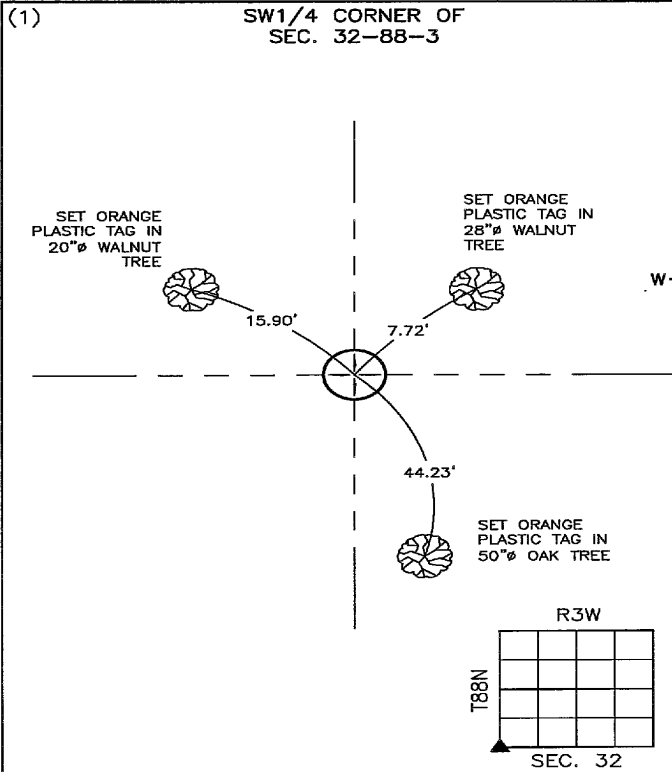


Recorded: 5/23/2022 at 9:48:08.0 AM
County Recording Fee: \$7.00
Iowa E-Filing Fee: \$3.13
Combined Fee: \$10.13
Revenue Tax:
Delaware County, Iowa
Daneen Schindler RECORDER
BK: 2022 PG: 1636

PREPARED BY/RETURN TO: FEHR GRAHAM, 221 E. MAIN ST., SUITE 301, MANCHESTER, IA 52057 - PH: 563-927-2060

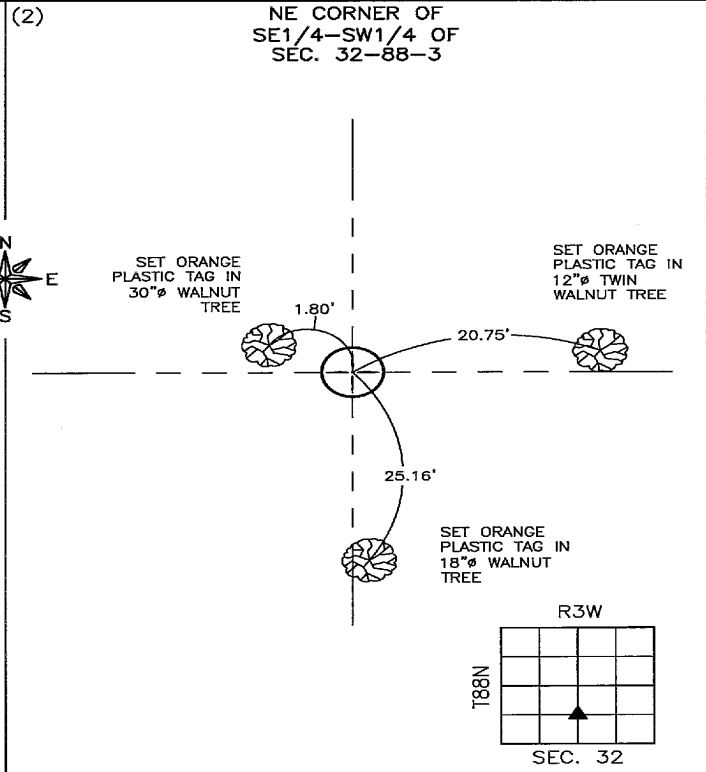
UNITED STATES PUBLIC LAND SURVEY CORNER CERTIFICATE
DELAWARE COUNTY, IOWA
SECTION 32-T88N-R3W



PREVIOUSLY RECORDED:
IN BK. 2009, PG. 3364 IN COUNTY RECORDER'S OFFICE.

PURPOSE OF CERTIFICATE:
FILING NEW CORNER CERTIFICATE DUE TO MISSING TIES FROM PREVIOUS CERTIFICATE.

MONUMENT DESCRIPTION AND ESTABLISHMENT:
FOUND 1/2"Ø REBAR W/YELLOW PLASTIC CAP #12642



PREVIOUSLY RECORDED:
NO PREVIOUS CERTIFICATE ON FILE.

PURPOSE OF CERTIFICATE:
SET MONUMENT ONLINE AT MIDPOINT BETWEEN THE CENTER OF SECTION AND THE S1/4 CORNER OF SECTION.

MONUMENT DESCRIPTION AND ESTABLISHMENT:
SET 1/2"Ø REBAR W/2"Ø ALUMINUM CAP #24627

CORNERS TO BE INDEXED

	CORNER	SECTION	TOWNSHIP	RANGE
(1)	SW CORNER	32	88N	3W
(2)	NE of SE1/4-SW1/4	32	88N	3W



I hereby certify that this land surveying document was prepared and the related survey work was performed by me or under my direct personal supervision and that I am a duly licensed Land Surveyor under the laws of the State of Iowa.

Adam J. Recker
Adam J. Recker, P.L.S.
License Number: 24627

5-19-2022
Date

My license renewal date is December 31, 2023.
Sheets covered by this seal: THIS SHEET ONLY

FEHR GRAHAM

ENGINEERING & ENVIRONMENTAL

© 2022 FEHR GRAHAM

ILLINOIS
IOWA
WISCONSIN

G:\C3D\22-546 Gibbs\22-546 SCC U-R.dwg

JOB NUMBER:
22-546

SHEET NUMBER:
1 of 1