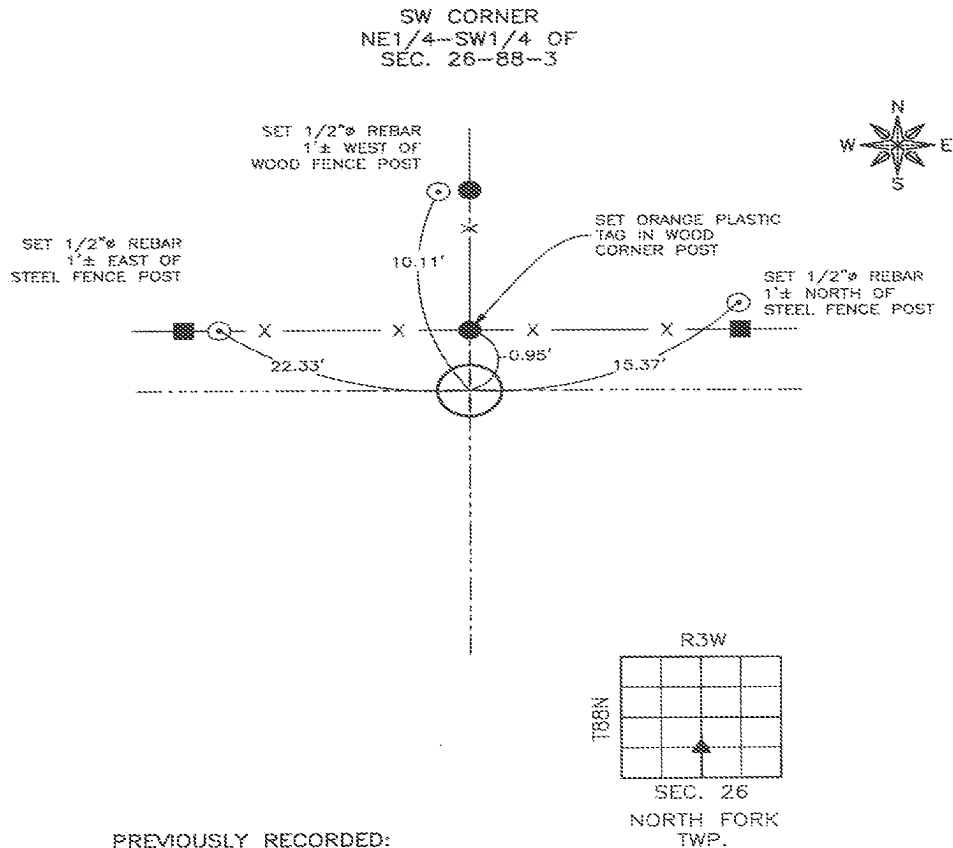


Recorded: 4/26/2022 at 2:21:15.0 PM
County Recording Fee: \$7.00
Iowa E-Filing Fee: \$3.13
Combined Fee: \$10.13
Revenue Tax:
Delaware County, Iowa
Daneen Schindler RECORDER
BK: 2022 PG: 1324

PREPARED BY/RETURN TO: FEHR GRAHAM, 221 EAST MAIN STREET, MANCHESTER, IA 52057 -- PH: (563)927--2060

UNITED STATES PUBLIC LAND SURVEY CORNER CERTIFICATE
DELAWARE COUNTY, IOWA
SECTION 26--T88N--R3W



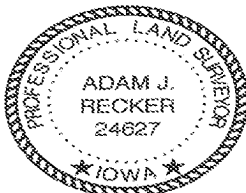
PREVIOUSLY RECORDED:
NO PREVIOUS CERTIFICATE ON FILE.

PURPOSE OF CERTIFICATE:
SET MONUMENT AT INTERSECTION OF FENCELINES
USING DISTANCES FROM A RECORDED WARRANTY DEED
RECORDED ON FEBRUARY 18, 2022, IN BOOK 2002,
PAGE 567, ON FILE IN THE DELAWARE COUNTY
RECORDER'S OFFICE, MANCHESTER, IOWA.

MONUMENT DESCRIPTION AND ESTABLISHMENT:
SET 1/2"Ø REBAR W/2"Ø ALUMINUM CAP #24627

CORNERS TO BE INDEXED

CORNER	SECTION	TOWNSHIP	RANGE
SW of NE1/4--SW1/4	26	88N	3W



I hereby certify that this land surveying document
was prepared and the related survey work was
performed by me or under my direct personal
supervision and that I am a duly licensed Land
Surveyor under the laws of the State of Iowa.

Adam J. Recker
Adam J. Recker, P.L.S.
License Number: 24627
My license renewal date is December 31, 2023.
Sheets covered by this seal: THIS SHEET ONLY

4-26-2022
Date

FEHR GRAHAM
ENGINEERING & ENVIRONMENTAL
© 2022 FEHR GRAHAM

ILLINOIS
IOWA
WISCONSIN

G:\CSD\22\22-299 Gibbs\22-299 SDC R.dwg

JOB NUMBER:
22--299

SHEET NUMBER:
1 of 1