



Book 2012 Page 2218

Document 2012 2218 Type 06 007 Pages 1  
Date 7/06/2012 Time 4:04:01PM  
Rec Amt \$7.00

DEBORAH L PEYTON, RECORDER/REGISTRAR  
DELAWARE COUNTY IOWA

TeKIPPE ENGINEERING, P.C., 1919 210th Street, P.O. Box 357, Manchester, Iowa 52057 Phone (563) 927-2060

UNITED STATES PUBLIC LAND SURVEY CORNER CERTIFICATE  
OF

Land Survey Monuments situated in Section 1, Township 88 North, Range 6 West of the Fifth Principal Meridian, Delaware County, Iowa.  
Previously recorded in Bk. 2002, Pg. 3269 in County Recorder's Office.  
(book, page, document number, etc.)

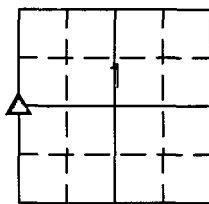
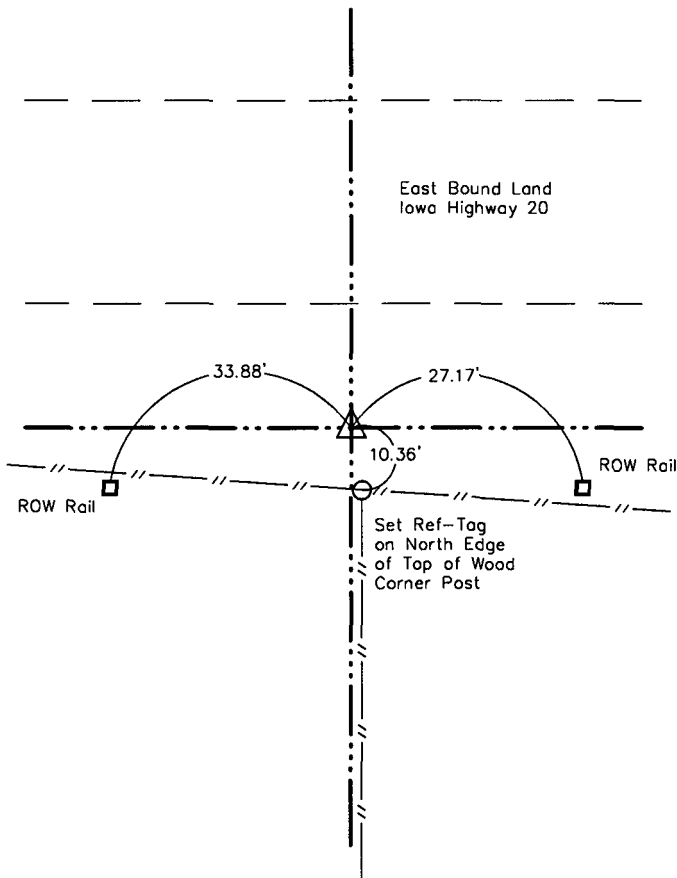
(Show reason for preparing this certificate, the evidence and detailed procedures used in establishing the corner positions and monumentation found or placed.)

Monument Description and Remarks: W 1/4 Corner of Section 1-T88N-R6W: Set 1/2"Ø Rebar w/2"Ø Aluminum Cap PLS 7060 from ties based upon information found on a Section Corner Certificate recorded in Book 2002, Page 3269, by J. David Gibbs PLS. Retied because no monument was recovered.

PLAN VIEW

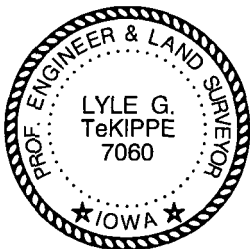
Project Number 122055LS  
Field Book: Manchester No. 39, Pages 53-54

Show a minimum of three reference ties to durable physical objects, relevant monuments and physical conditions that will enable recovery of the corner.



Delaware Twp.

W 1/4 Corner of Section 1-T88N-R6W  
Set 1/2"Ø Rebar w/2"Ø Aluminum Cap PLS 7060



I hereby certify that this land surveying document was prepared and the related survey work was performed by me or under my direct personal supervision and that I am a duly licensed Land Surveyor under the laws of the State of Iowa.

Lyle G. TeKippe 7-5-12  
Lyle G. TeKippe, P.E. & P.L.S. Date  
License Number 7060  
My license renewal date is December 31, 2012.  
Sheets covered by this seal: This Sheet

List Corners to be Indexed

Corners	Section	Twp.	Range
W 1/4	1	88N	6W