



Book 2011 Page 3863

Document 2011 3863 Type 06 007 Pages 1

Date 11/30/2011 Time 2:44:08PM

Rec Amt \$7.00

DEBORAH L PEYTON, RECORDER/REGISTRAR
DELAWARE COUNTY IOWA

TeKIPPE ENGINEERING, P.C., 1919 210th Street, P.O. Box 357, Manchester, Iowa 52057 Phone (563) 927-2060

UNITED STATES PUBLIC LAND SURVEY CORNER CERTIFICATE

OF

Land Survey Monuments situated in Section 24, Township 87 North, Range 5 West of the Fifth Principal Meridian, Delaware County, Iowa.

Previously recorded in (1) None (2) None in County Recorder's Office.
(book, page, document number, etc.)

(Show reason for preparing this certificate, the evidence and detailed procedures used in establishing the corner positions and monumentation found or placed.)

Monument Description and Remarks: (1) NW Corner of the NE 1/4-NE 1/4 of Section 24-T87N-R5W:

Set Mag Nail with Stainless Steel Washer PLS 7060 equidistant and on-line between the N 1/4 Corner and the NE Corner.

(2) SW Corner of the SE 1/4-NE 1/4 of Section 24-T87N-R5W: Set 1/2"Ø rebar w/2"Ø Alum Cap PLS 7060

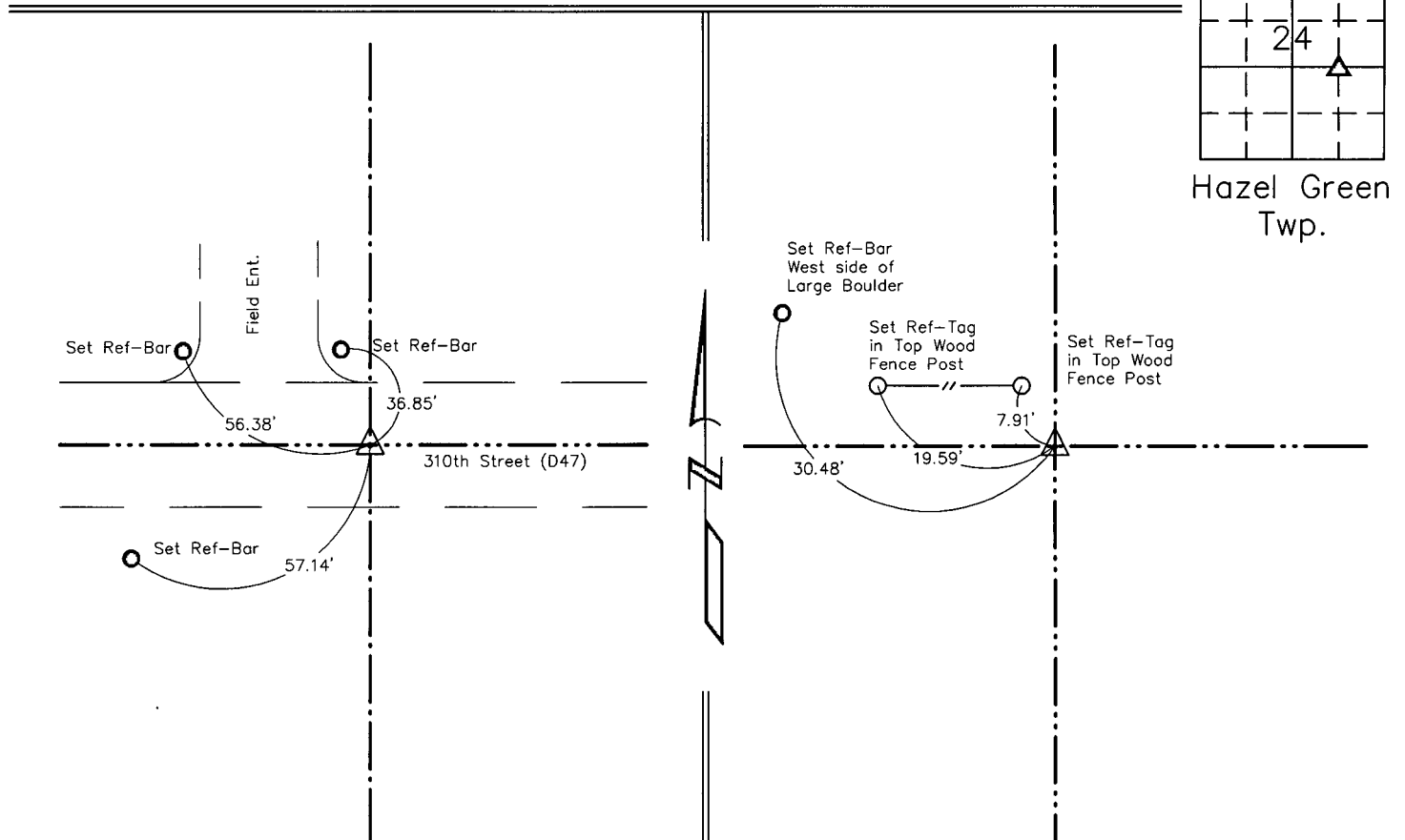
equidistant and on-line between the Center of Section and the E 1/4 Corner.

PLAN VIEW

Project Number 112096.LS

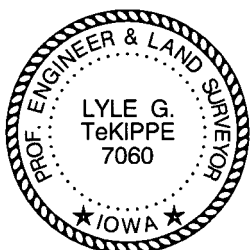
Field Book: Hazel Green Twp. No. 1, Pages 3-4

Show a minimum of three reference ties to durable physical objects, relevant monuments and physical conditions that will enable recovery of the corner.



(1) NW Corner of NE 1/4-NE 1/4 of Sec. 24-T87N-R5W
Set Mag Nail with Stainless Steel Washer PLS 7060

(2) SW Corner of SE 1/4-NE 1/4 of Sec. 24-T87N-R5W
Set 1/2"Ø Rebar w/2"Ø Alum. Cap PLS 7060



I hereby certify that this land surveying document was prepared and the related survey work was performed by me or under my direct personal supervision and that I am a duly licensed Land Surveyor under the laws of the State of Iowa.

Lyle G. TeKippe, P.E. & P.L.S.

License Number 7060

My license renewal date is December 31, 2012.

Sheets covered by this seal:

11-29-11

Date

List Corners to be Indexed

Corners	Section	Twp.	Range
NW of NE-NE	24	87N	5W
SW of SE-NE	24	87N	5W