



√ Book 2006 Page 547

Document 2006 547 Type 06 007 Pages 1
Date 2/21/2006 Time 8:17 AM
Rec Amt \$7.00

CHG
X

DEBORAH L. PEYTON, RECORDER/REGISTRAR
DELAWARE COUNTY IOWA

PREPARED BY: J. DAVID GIBBS 105 WEST MAIN STREET MANCHESTER, IA 52057, 563-927-2434

UNITED STATES PUBLIC LAND SURVEY CORNER CERTIFICATE OF

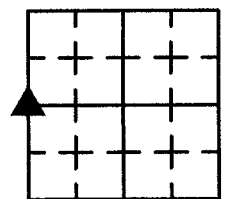
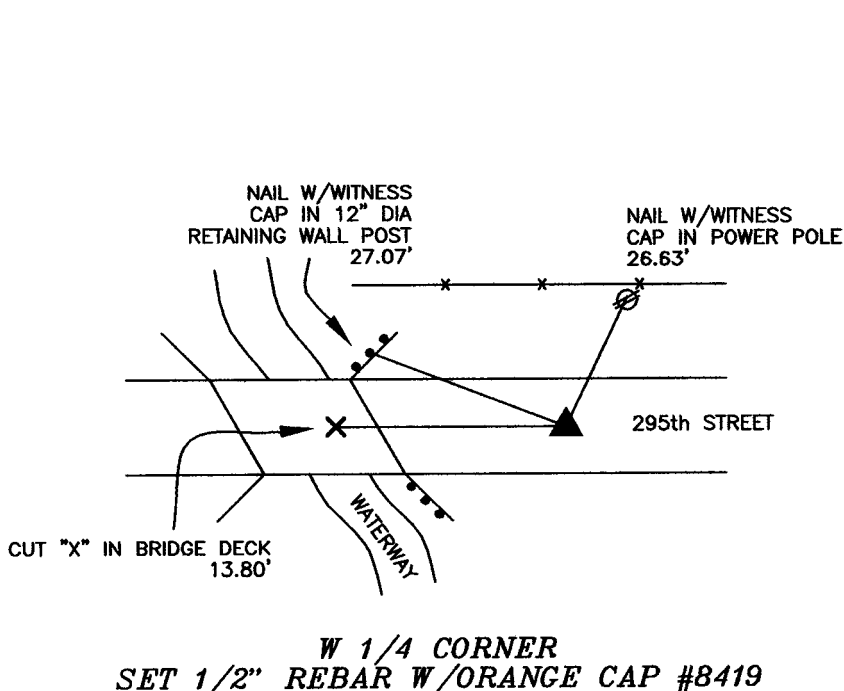
Land Survey Monuments situated in Section 11, Township T87N, Range R5W, of the Fifth Principal Meridian, Delaware County, Iowa. Previously recorded in Not Recorded in County Recorder's Office.
(book, page, document number, etc.)

(Show reason for preparing this certificate, the evidence and detailed procedures used in establishing the corner positions monumentation found or placed.)

Monument Description and Remarks: W 1/4 Corner - Set 1/2" Rebar w/Orange Cap #8419 on Westerly extension of Quarter Line from iron rod w/yellow cap #8812 at the E 1/4 Corner through the iron rod w/yellow cap #8812 at the center of section and 2655.18' (40.23 chains) westerly of the center of section as shown in County Surveyor Book 2, Page 142.

PLAN VIEW

(Show a minimum of three reference ties to durable physical objects, relevant monuments and physical conditions that will enable recovery of the corner.)



SECTION 11
T87N, R5W



W 1/4 CORNER
SET 1/2" REBAR W/ORANGE CAP #8419

TIES ARE TO CORNERS IN PLAT OF PARCEL B; SEC 14, T87N, R5W

G.E.S. #06-10

I hereby certify that this land surveying document was prepared and the related survey work was performed by me or under my direct personal supervision and that I am a duly licensed land surveyor under the laws of the State of Iowa.

Signature J. David Gibbs

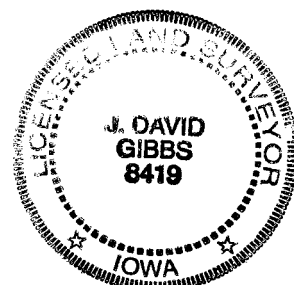
Seal

Date 2/21/06 Lic. No. 8419

My license renewal date is December 31, 2006

List Corners to be Indexed:

Corners	Section	Township	Range
W 1/4 Corner	11	T87N	R5W



Pages or sheets covered by this seal: 1

BOOK 2006 PAGE 547