



Book 2006 Page 304

Document 2006 304 Type 06 007 Pages 1  
Date 1/27/2006 Time 3:51 PM  
Rec Amt \$7.00

DEBORAH L. PEYTON, RECORDER/REGISTRA  
DELAWARE COUNTY IOWA

PREPARED BY/RETURN TO: J. DAVID GIBBS 105 WEST MAIN STREET MANCHESTER, IA 52057, 563-927-2434

# UNITED STATES PUBLIC LAND SURVEY CORNER CERTIFICATE OF

Land Survey Monuments situated in Section 35, Township T89N, Range R6W, of the Fifth Principal Meridian, Delaware County, Iowa. Previously recorded in Not Recorded in County Recorder's Office.  
(book, page, document number, etc.)

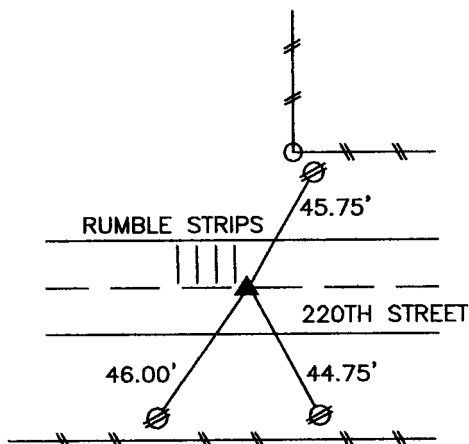
(Show reason for preparing this certificate, the evidence and detailed procedures used in establishing the corner positions monumentation found or placed.)

Monument Description and Remarks: SE Corner – Found Cut "X" in P.C.C. Pavement.

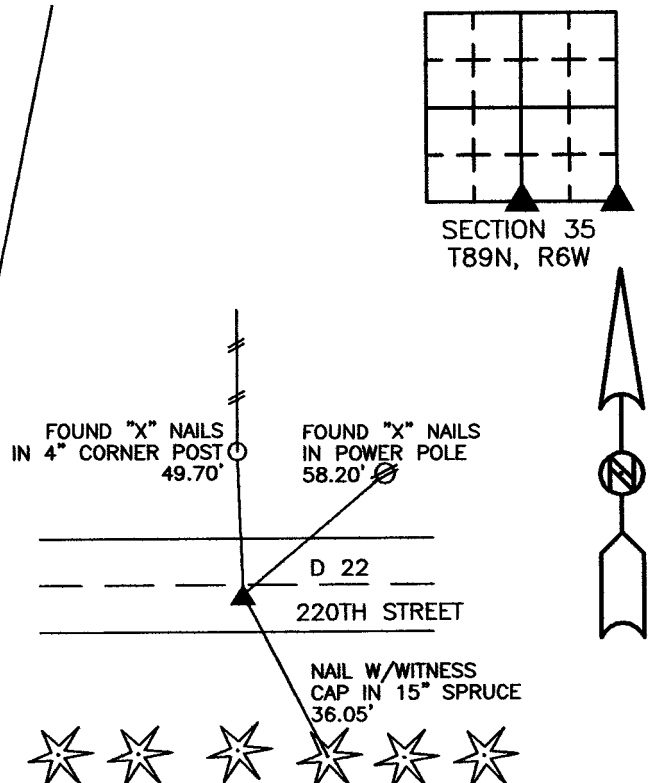
S 1/4 Corner – Found Cut "X" in P.C.C. Pavement.

## PLAN VIEW

(Show a minimum of three reference ties to durable physical objects, relevant monuments and physical conditions that will enable recovery of the corner.)



**S 1/4 CORNER  
FOUND CUT "X" IN P.C.C. PAVEMENT  
ALL DIMENSION FROM FOUND "X" NAILS  
IN POWER POLES**



**SE CORNER  
FOUND CUT "X" IN P.C.C. PAVEMENT  
3' SOUTH OF CENTERLINE**

TIES ARE TO CORNERS IN PLAT OF PARCEL A; SEC 35, T89N, R6W

G.E.S. #05-90

I hereby certify that this land surveying document was prepared and the related survey work was performed by me or under my direct personal supervision and that I am a duly licensed land surveyor under the laws of the State of Iowa.

Signature

*J. David Gibbs*  
J. David Gibbs

Seal

Date

1/27/06

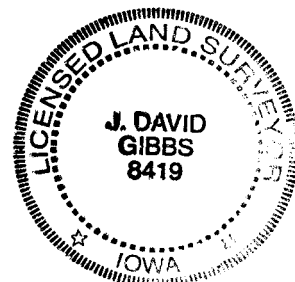
Lic. No.

8419

My license renewal date is December 31, 2006

List Corners to be Indexed:

Corners	Section	Township	Range
S 1/4 Corner	35	T89N	R6W
SE Corner			



Pages or sheets covered by this seal: 1

BOOK 2006 PAGE 304