

CHG
X

PREPARED BY: J. DAVID GIBBS 223 WEST MAIN STREET MANCHESTER, IA 52057, 319-927-2434

UNITED STATES PUBLIC LAND SURVEY CORNER CERTIFICATE OF

Land Survey Monuments situated in Section 9, Township T87N, Range R5W, of the Fifth Principal Meridian, Delaware County, Iowa. Previously recorded in Bk. 1999, Pg. 2881 in County Recorder's Office.
(book, page, document number, etc.)

(Show reason for preparing this certificate, the evidence and detailed procedures used in establishing the corner positions monumentation found or placed.)

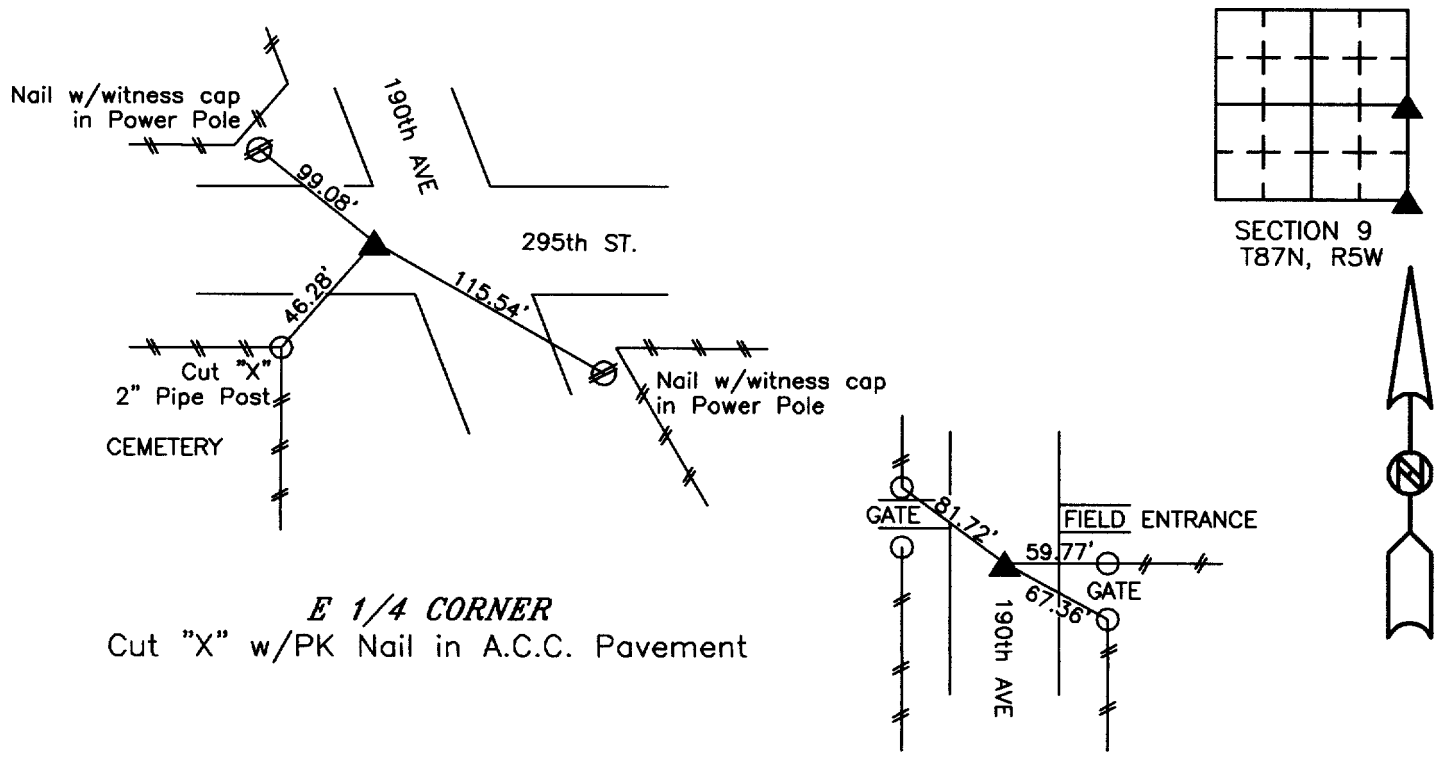
Monument Description and Remarks: E 1/4 Corner, Cut "X" w/P.K. Nail in A.C.C. Pavement
SE Corner, Cut "X" in P.C.C. Pavement.

For original descriptions and information see Book 1999, Page 2881.

Corners were reset due to road construction using existing monuments and Acquisition Plat data.

PLAN VIEW

(Show a minimum of three reference ties to durable physical objects, relevant monuments and physical conditions that will enable recovery of the corner.)



E 1/4 CORNER
Cut "X" w/PK Nail in A.C.C. Pavement

All Dimensions from Nail w/Witness Caps
in 6" Wood Post
SE CORNER
Cut "X" in P.C.C. Pavement

G.E.S. #99-31

I hereby certify that this land surveying document was prepared and the related survey work was performed by me or under my direct personal supervision and that I am a duly licensed land surveyor under the laws of the State of Iowa.

Signature J. David Gibbs
J. David Gibbs

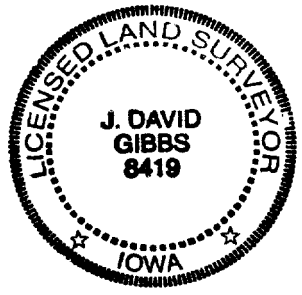
Seal

Date 12/12/03 Lic. No. 8419

My license renewal date is December 31, 2004

List Corners to be Indexed:

Corners	Section	Township	Range
E 1/4 SE	9	T87N	R5W



Pages or sheets covered by this seal: 1