

PREPARED BY: J. DAVID GIBBS 223 WEST MAIN STREET MANCHESTER, IA 52057, 319-927-2484
UNITED STATES PUBLIC LAND SURVEY CORNER CERTIFICATE
OF

Land Survey Monuments situated in Section 36, Township T89N, Range R6W, of the Fifth Principal Meridian, Delaware County, Iowa. Previously recorded in Not recorded in County Recorder's Office.
(book, page, document number, etc.)

(Show reason for preparing this certificate, the evidence and detailed procedures used in establishing the corner positions monumentation found or placed.)

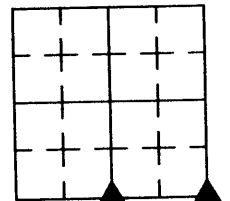
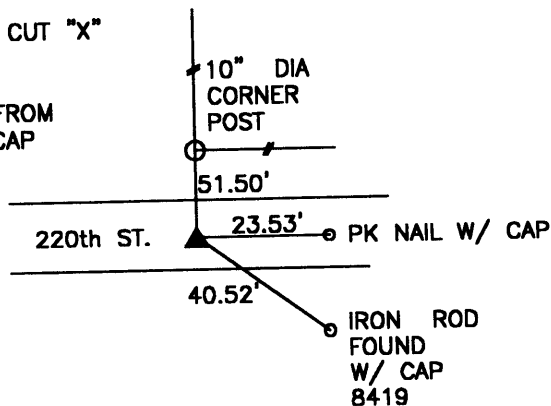
Monument Description and Remarks: S 1/4 Corner, FD. P.K. Nail w/ cut "X" in pavement
SE Corner-SE 1/4, FD. bridge spike w/ cut "X" in pavement

PLAN VIEW

S 1/4 CORNER

FD. P.K. NAIL W/ CUT "X"
IN PAVEMENT

ALL DIMENSIONS FROM
NAIL W/WITNESS CAP
UNLESS NOTED



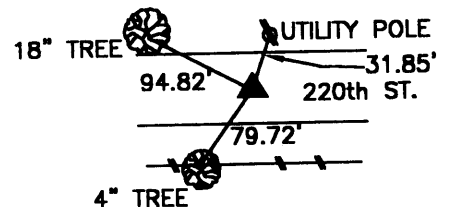
SECTION 36
T89N, R6W



SE CORNER

FD. BRIDGE SPIKE W/
CUT "X" IN PAVEMENT

ALL DIMENSIONS FROM
NAIL W/WITNESS CAP



G.E.S. #99-18

I hereby certify that this land surveying document was prepared and the related survey work was performed by me or under my direct personal supervision and that I am a duly licensed land surveyor under the laws of the State of Iowa.

Signature

J. David Gibbs

Date

5/10/00

Lic. No.

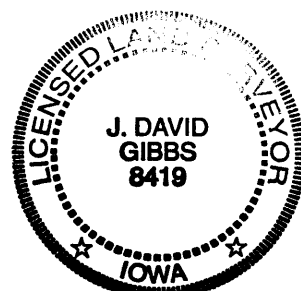
8419

My license renewal date is December 31, 2000

List Corners to be Indexed:

Corners	Section	Township	Range
S 1/4	36	T89N	R6W
SE CORNER			

Seal



Pages or sheets covered by this seal: 1