

DELAWARE COUNTY IOWA
FILED
1999
1999 MAY 1 1999
1999 MAY 20 PM 2:28
6.00

PREPARED BY: J. DAVID GIBBS 223 WEST MAIN STREET MANCHESTER, IA 52057, 319-547-2434

UNITED STATES PUBLIC LAND SURVEY CORNER CERTIFICATE
OF

Land Survey Monuments situated in Section 1, Township T88N, Range R6W, of the Fifth Principal Meridian, Delaware County, Iowa. Previously recorded in Not Recorded in County Recorder's Office.
(book, page, document number, etc.)

(Show reason for preparing this certificate, the evidence and detailed procedures used in establishing the corner positions monumentation found or placed.)

Monument Description and Remarks: NW CORNER-NW 1/4 FD. BRIDGE SPIKE W/ CUT "X"
IN PAVEMENT

NORTH 1/4 CORNER, FD. BRIDGE SPIKE WITH CUT "X" IN PAVEMENT

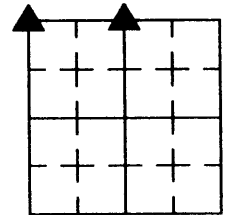
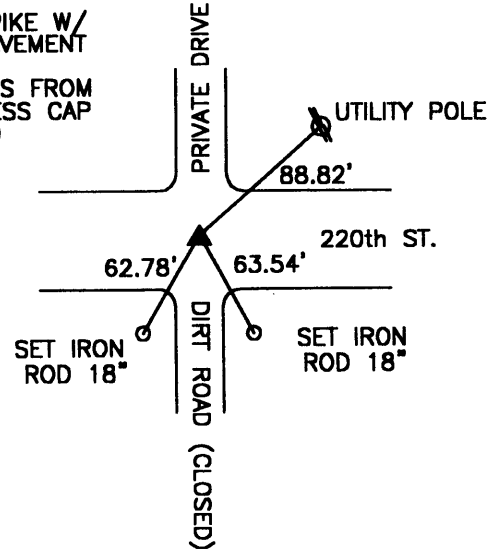
PLAN VIEW

(Show a minimum of three reference ties to durable physical objects, relevant monuments and physical conditions that will enable recovery of the corner.)

NW CORNER

FD. BRIDGE SPIKE W/
CUT "X" IN PAVEMENT

ALL DIMENSIONS FROM
NAIL W/ WITNESS CAP
UNLESS NOTED



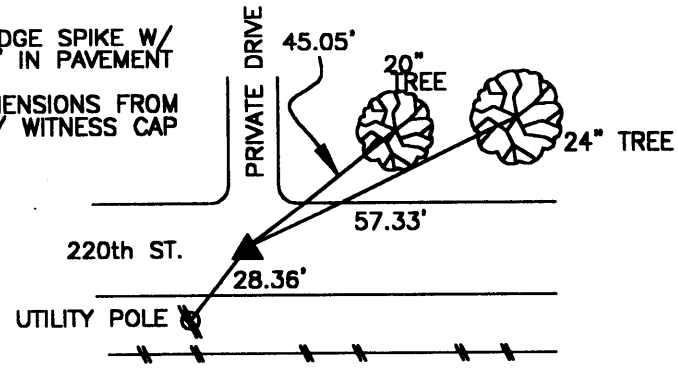
SECTION 1
T88N, R6W



NORTH 1/4 CORNER

FD. BRIDGE SPIKE W/
CUT "X" IN PAVEMENT

ALL DIMENSIONS FROM
NAIL W/ WITNESS CAP



G.S.E. 99-18

I hereby certify that this land surveying document was prepared and the related survey work was performed by me or under my direct personal supervision and that I am a duly licensed land surveyor under the laws of the State of Iowa.

Signature J. David Gibbs
J. David Gibbs

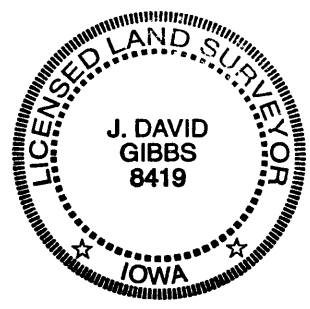
Date 5/18/99 Reg. No. 8419

My license renewal date is December 31, 2000

List Corners to be Indexed:

Corners	Section	Township	Range
NW CORNER	1	T88N	R6W
NORTH 1/4 CORNER			

Seal



Pages or sheets covered by this seal: 1