

DELAWARE COUNTY IOWA
FILED

1999 APR 27 PM 4:25

BOOK 1999 PAGE 1457
DEBORAH L. AYTON
DELAWARE CO. RECORDER
\$6.00

PREPARED BY: J. DAVID GIBBS 223 WEST MAIN STREET MANCHESTER, IA 52057, 319-927-2434

UNITED STATES PUBLIC LAND SURVEY CORNER CERTIFICATE OF

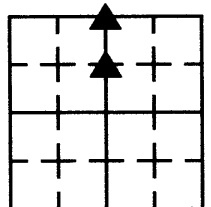
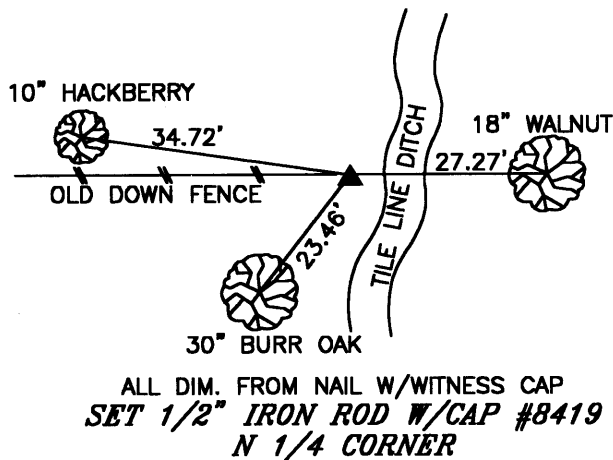
Land Survey Monuments situated in Section 28, Township T89N, Range R6W, of the Fifth Principal Meridian, Delaware County, Iowa. Previously recorded in Not Recorded in County Recorder's Office.
(book, page, document number, etc.)

(Show reason for preparing this certificate, the evidence and detailed procedures used in establishing the corner positions monumentation found or placed.)

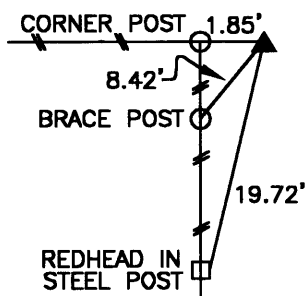
Monument Description and Remarks: N 1/4 Corner, Set Mon. proportional between NE and NW Corners.
SE Corner- NE 1/4- NW 1/4, Set Monument at fence corner and on line between N 1/4 Corner and
fence corner at Center of Section.

PLAN VIEW

(Show a minimum of three reference ties to durable physical objects, relevant monuments and physical conditions that will enable recovery of the corner.)



SECTION 28
T89N, R6W



ALL DIM. FROM NAIL W/WITNESS CAP
SET 1/2" IRON ROD W/CAP #8419
SE CORNER - NE 1/4 - NW 1/4

G.E.S. #99-13

I hereby certify that this land surveying document was prepared and the related survey work was performed by me or under my direct personal supervision and that I am a duly licensed land surveyor under the laws of the State of Iowa.

Signature

J. David Gibbs
J. David Gibbs

Seal

Date

4/27/99

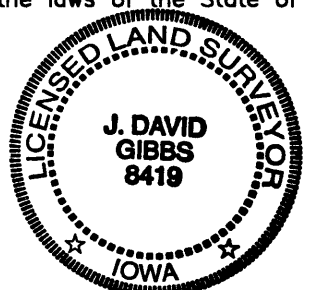
Lic. No.

8419

My license renewal date is December 31, 2000

List Corners to be Indexed:

Corners	Section	Township	Range
N 1/4	28	T89N	R6W
SE - NE - NW			



Pages or sheets covered by this seal: 1

BOOK 1999 PAGE 1452