

UNITED STATES PUBLIC LAND SURVEY CORNER CERTIFICATE
OF

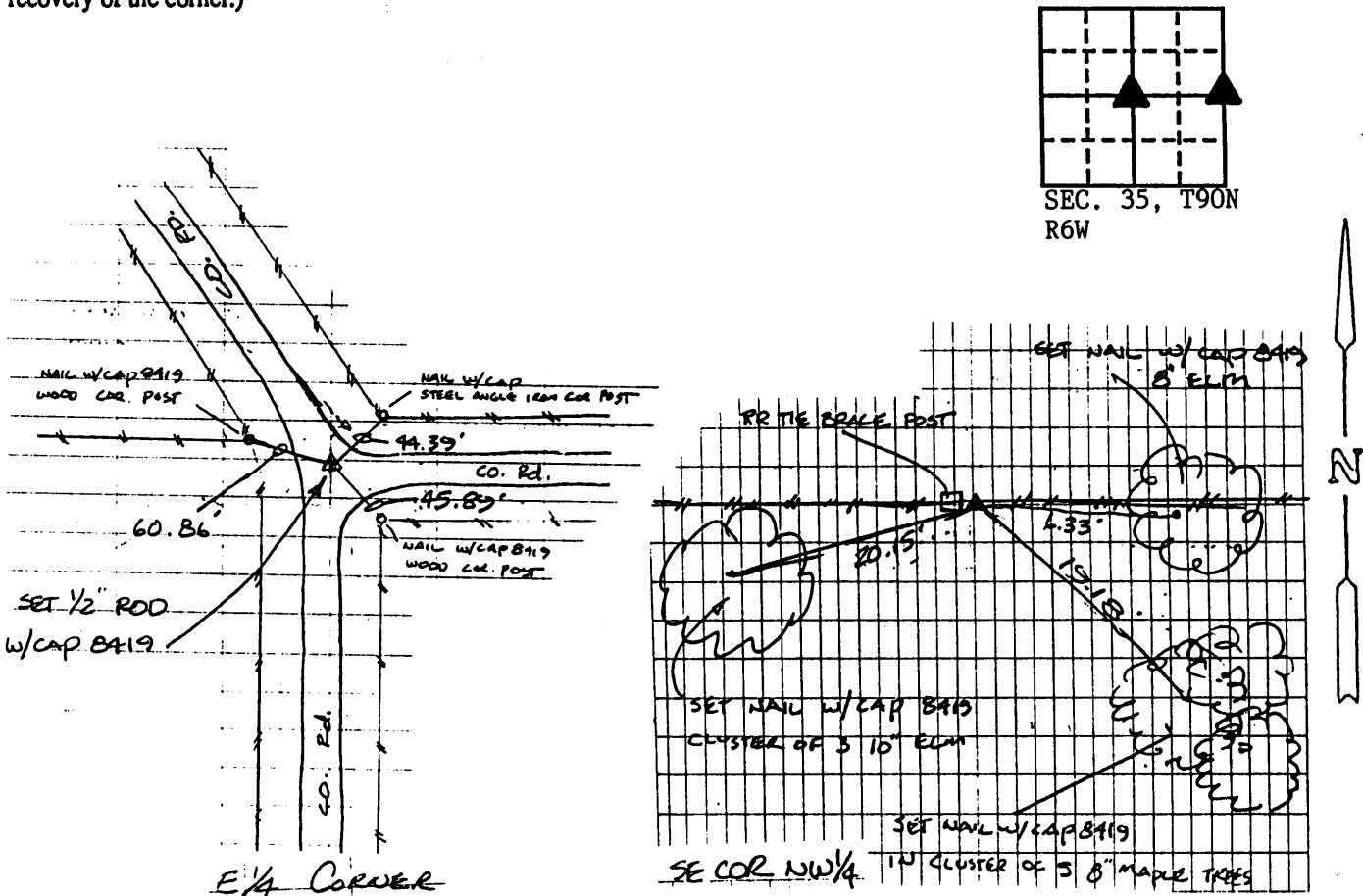
Land Survey Monuments situated in Section Thirty-five (35), Township 90 North, Range Six (6) West, of the Fifth Principal Meridian, Delaware County, Iowa.
Previously recorded in _____ in County Recorder's Office.

(book, page, document number, etc.)
(Show reason for preparing this certificate, the evidence and detailed procedures used in establishing the corner positions and monumentation found or placed.)

Monument Description and Remarks: No Certificate recorded in the Office of the Delaware County Recorder. E 1/4 Corner set 2625.15 feet South of NE Corner of said Section 35 as recorded in Surveyors Record Book 2, Page 113 also said point being centerline intersection of three county roads in relation to County Road Record Book 1, Page 457. SE Corner of NW 1/4 - Straight line intersect of opposite 1/4 Corners, moved Westerly to existing fence corner.

PLAN - VIEW

(Show a minimum of three reference ties to durable physical objects, relevant monuments and physical conditions that will enable recovery of the corner.)



DATE OF FIELD WORK: 9/8/93, 9/22/93, 9/28/93

TSE NO: 93-56

I hereby certify that the survey work was completed and this certificate was prepared by me or under my direct personal supervision and that I am a duly registered land surveyor under the laws of the state of Iowa.

Signature: J. David Gibbs
Name typed or printed: J. David Gibbs
Date: 10/12/93 Reg. No. 8419

Corners	List Corners to be Indexed		
	Section	Twp	Range
E 1/4	35	T90N	R6W
SE Cor. of NW 1/4	35	T90N	R6W

SEAL

