

UNITED STATES PUBLIC LAND SURVEY CORNER CERTIFICATE  
OF

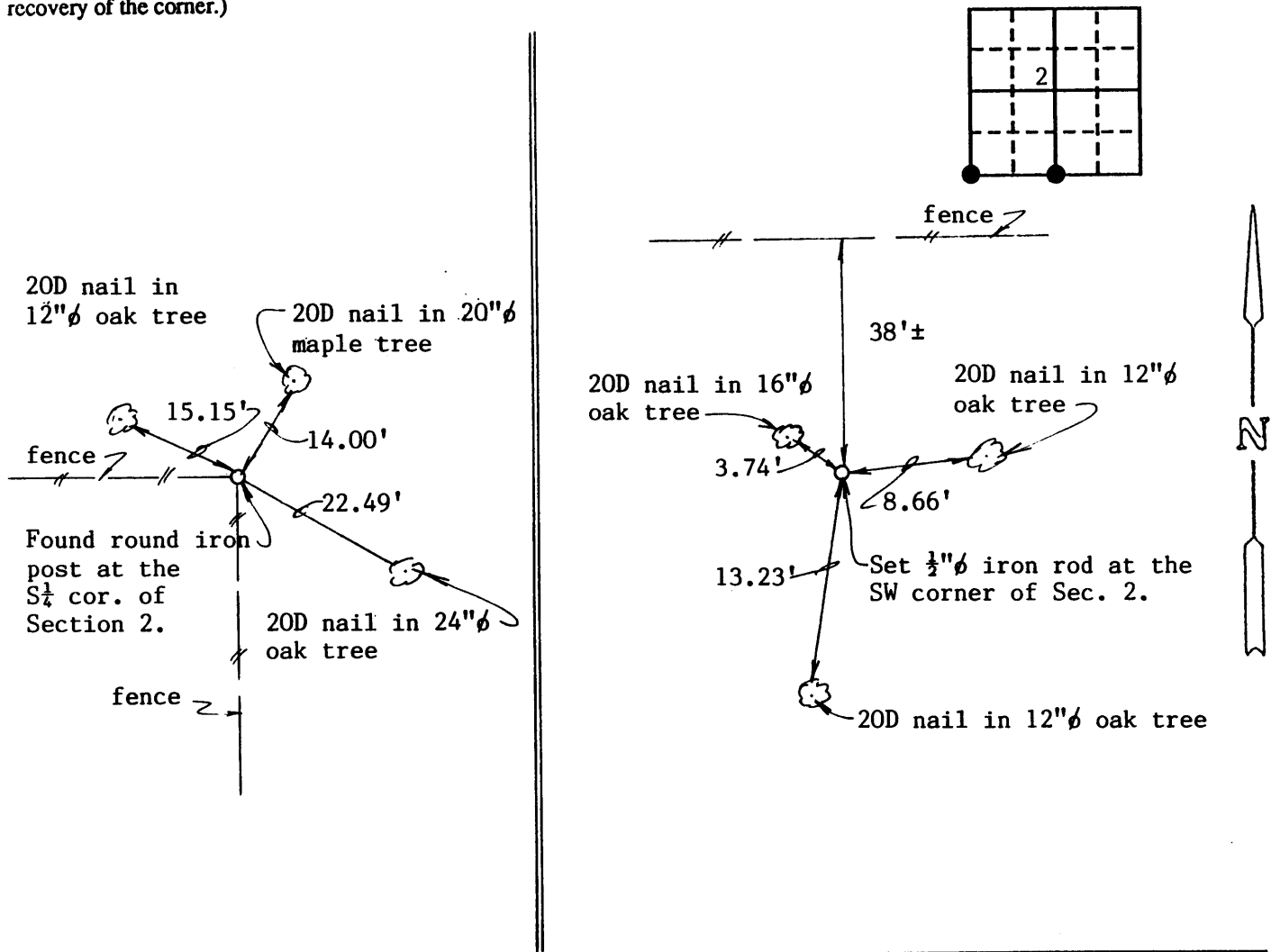
Land Survey Monuments situated in Section 2, Township 90 North, Range 3 West, of the Fifth Principal Meridian, Delaware County, Iowa.  
Previously recorded in no corner certificate on file in County Recorder's Office.  
(book, page, document number, etc.)

(Show reason for preparing this certificate, the evidence and detailed procedures used in establishing the corner positions and monumentation found or placed.)

Monument Description and Remarks: Found round iron post at the S $\frac{1}{4}$  corner of Sec. 2.  
Established SW corner of Sec. 2 using S $\frac{1}{4}$  corner and a T-bar west of the SW cor.  
of Sec. 2. Set  $\frac{1}{2}$ "  $\phi$  iron rod.

PLAN - VIEW

(Show a minimum of three reference ties to durable physical objects, relevant monuments and physical conditions that will enable recovery of the corner.)

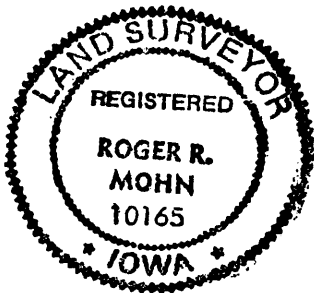


I hereby certify that the survey work was completed and this certificate was prepared by me or under my direct personal supervision and that I am a duly registered land surveyor under the laws of the state of Iowa.

Signature: Roger R. Mohn  
Name typed or printed: Roger R. Mohn

Date: March 18, 1993 Reg. No. 10165

SEAL



Corners	List Corners to be Indexed Section	Twp	Range
S $\frac{1}{4}$ Cor.	2	90N	3W
SW Cor.	2	90N	3W

FILE No. 270-2794  
RECORDING FEE \$ 5.00  
TRANSFER FEE \$           

FILED FOR RECORD THE 22 DAY OF March, 1993 AT 11:44  
O'CLOCK A. M. BOOK 1 PAGE 211

STATE OF IOWA, DELAWARE COUNTY  
Deborah L. Peyton, Recorder  
Cor. Mon.