

Prepared By: J. Brian Morrissey, Morrissey Surveying, 1926 Pammel Park Road, Winterset, Ia. 50273, Tele. (515) 462-2166

UNITED STATES PUBLIC LAND SURVEY CORNER CERTIFICATE  
OF

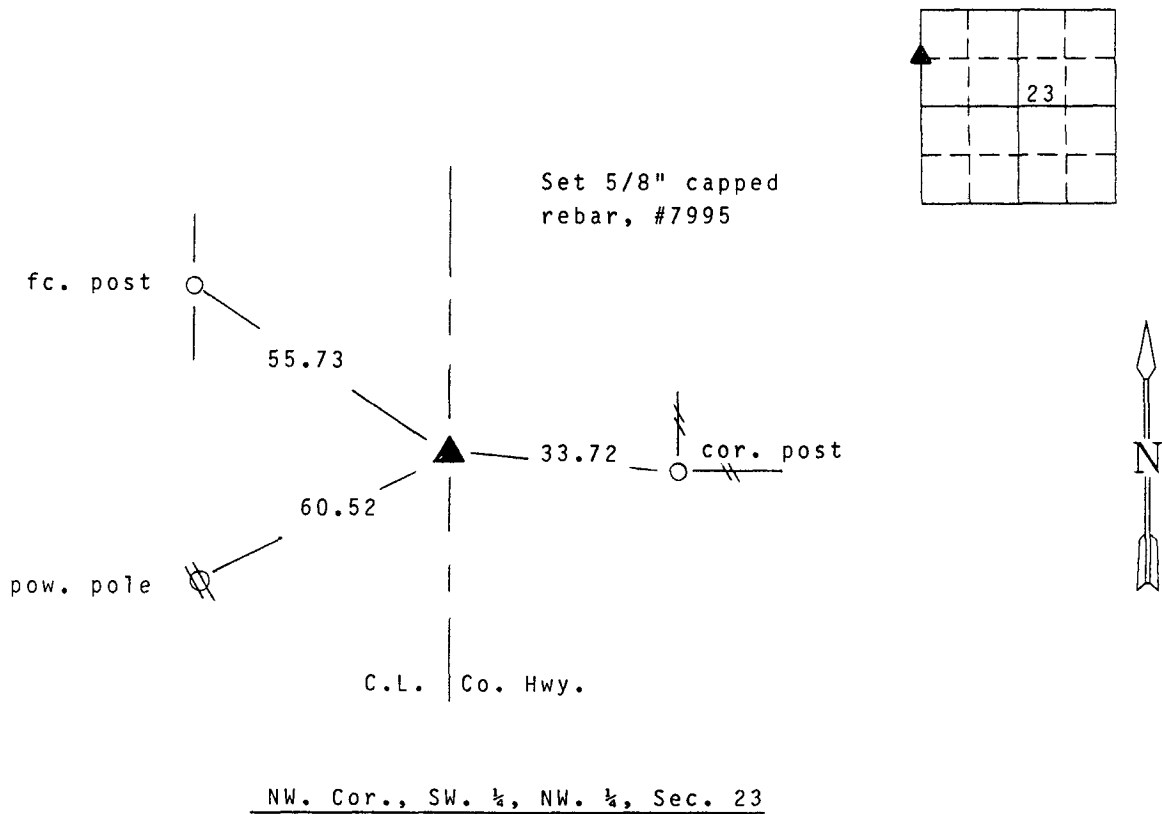
Land Survey Monuments situated in Section 23, Township 76N, Range 27W, of the Fifth Principal Meridian, Madison County, Iowa.  
Previously recorded in N.A. in County Records Office.  
(book, page, document number, etc.)

(Show reason for preparing this certificate, the evidence and detailed procedures used in establishing the corner positions and monumentation found or placed.)

Monument Description and Remarks: Set 5/8" capped rebar, #7995, at midpoint between  
NW. Cor. Sec. and W. 1/4 Cor..

PLAN VIEW

(Show a minimum of three reference ties to durable physical objects, relevant monuments and physical conditions that will enable recovery of the corner.)



Note: all ties to "x" nails unless noted



I hereby certify that the survey work was completed and this certificate was prepared by me or my direct personal supervision and that I am a duly registered land surveyor under the laws of the state of Iowa. My registration renewal date is 12/31/97.

Signature: J. Brian Morrissey  
Name typed or printed: J. Brian Morrissey  
Date: 7/1/96 Reg. No. 7995